

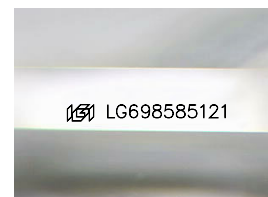
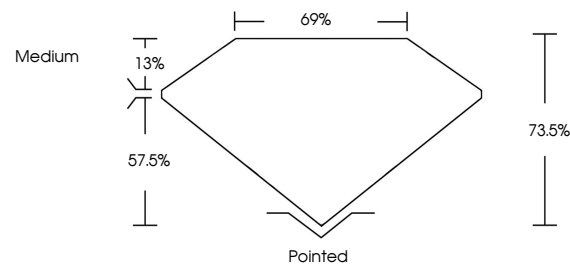


**ELECTRONIC COPY**

## LABORATORY GROWN DIAMOND REPORT

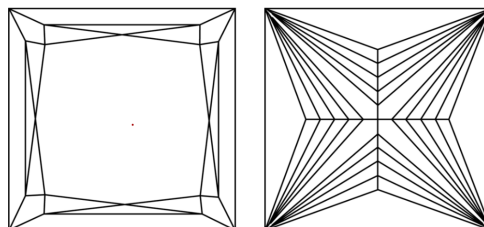
LG698585121  
Report verification at [igi.org](https://igi.org)

## PROPORTIONS



Sample Image Used

## CLARITY CHARACTERISTICS



### KEY TO SYMBOLS

Red symbols indicate internal characteristics.  
Green symbols indicate external characteristics.

## COLOR

D E F G H I J Faint Very Light Light

## CLARITY

IF	VS <sup>1-2</sup>	VS <sup>1-2</sup>	SI <sup>1-2</sup>	I <sup>1-3</sup>
Internally Flawless	Very Very Slightly Included	Very Slightly Included	Slightly Included	Included

## LABORATORY GROWN DIAMOND REPORT



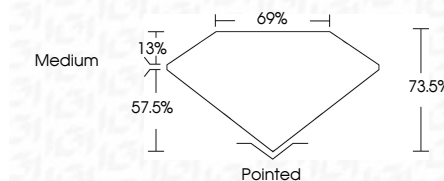
April 24, 2025

IGI Report Number **LG698585121**Description **LABORATORY GROWN DIAMOND**Shape and Cutting Style **PRINCESS CUT**

Measurements 9.60 X 9.39 X 6.90 MM

## GRADING RESULTS

Carat Weight 5.33 CARATS

Color Grade **E**Clarity Grade WS 2

### ADDITIONAL GRADING INFORMATION

Polish EXCELLENT

Symmetry **EXCELLENT**Fluorescence **NONE**Inscription(s)  LG698585121

Comments: This Laboratory Grown Diamond was created by Chemical Vapor Deposition (CVD) growth process.  
Type IIa



**www.igi.org**

© IGI 2020, International Gemological Institute

FD - 10 20



THIS DOCUMENT WAS PRODUCED WITH THE FOLLOWING SECURITY MEASURES: SPECIAL DOCUMENT PAPER, INK SCREENS, WATERMARK, BACKGROUND DESIGNS, HOLOGRAM AND OTHER SECURITY FEATURES NOT LISTED AND DO EXCEED DOCUMENT SECURITY INDUSTRY GUIDELINE

April 24, 2025  
 IGI Report No LG698585121  
 PRINCESS CIT

6.60 X 9.90 X 4.90 MM	5.33 CARATS	E
Carat Weight	VVS 2	73.6%
Color Grade	69%	Medium
Clarity Grade	Pointed	EXCELLENT
Depth	Polish	EXCELLENT
Table	Symmetry	NONE
Grade	Fluorescence	4mm (2.45mm x 3.55mm)

**Comments:**  
This Laboratory Grown Diamond was created by Chemical Vapor Deposition (CVD) growth process.