

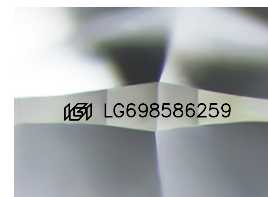
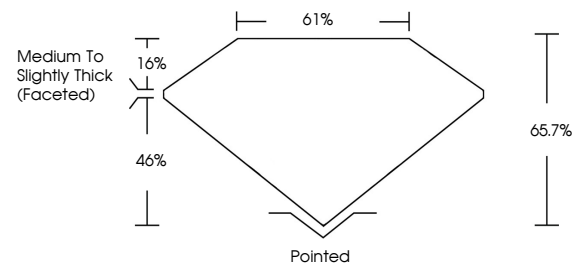


**ELECTRONIC COPY**

## LABORATORY GROWN DIAMOND REPORT

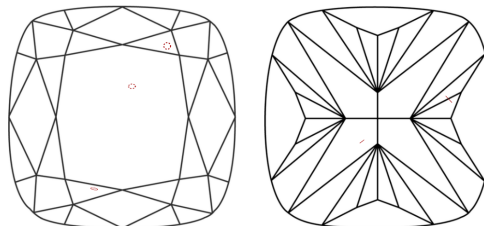
LG698586259  
Report verification at [igi.org](https://igi.org)

## PROPORTIONS



Sample Image Used

## CLARITY CHARACTERISTICS



### KEY TO SYMBOLS

Red symbols indicate internal characteristics.  
Green symbols indicate external characteristics.

## COLOR

D E F G H I J Faint Very Light Light

## CLARITY

IF      VWS<sup>1-2</sup>      VS<sup>1-2</sup>      SI<sup>1-2</sup>      I<sup>1-3</sup>

|                        |                                |                           |                      |          |
|------------------------|--------------------------------|---------------------------|----------------------|----------|
| Internally<br>Flawless | Very Very<br>Slightly Included | Very<br>Slightly Included | Slightly<br>Included | Included |
|------------------------|--------------------------------|---------------------------|----------------------|----------|



April 24, 2025

IGI Report Number **LG698586259**

|             |                          |
|-------------|--------------------------|
| Description | LABORATORY GROWN DIAMOND |
|-------------|--------------------------|

Shape and Cutting Style **SQUARE CUSHION MODIFIED  
BRILLIANT**

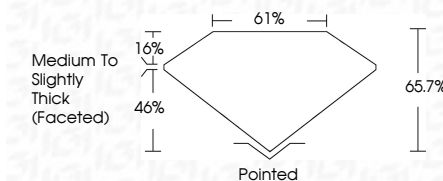
Measurements **7.11 X 6.86 X 4.51 MM**

## GRADING RESULTS

Carat Weight **1.76 CARAT**

Color Grade **FANCY VIVID GREEN**

Clarity Grade VS 1



### ADDITIONAL GRADING INFORMATION

Polish VERY GOOD

Symmetry **VERY GOOD**Fluorescence **NONE**Inscription(s)  LG698586259

Comments: This Laboratory Grown Diamond was created by High Pressure High Temperature (HPHT) growth process.

Indications of post-growth treatment.



© IGI 2020, International Gemological Institute

FD - 10 20

**www.igi.org**

THIS DOCUMENT WAS PRODUCED WITH THE FOLLOWING SECURITY MEASURES: SPECIAL DOCUMENT PAPER, INK SCREENS, WATERMARK BACKGROUND DESIGNS, HOLOGRAM AND OTHER SECURITY FEATURES NOT LISTED AND DO EXCEED DOCUMENT SECURITY INDUSTRY GUIDELINES

|                                                                                                                                                  |                         |                                    |                                   |  |
|--------------------------------------------------------------------------------------------------------------------------------------------------|-------------------------|------------------------------------|-----------------------------------|--|
| April 24, 2026                                                                                                                                   | G1 Report No. LG4985299 |                                    | SQUARE CUSHION MODIFIED BRILLIANT |  |
|                                                                                                                                                  |                         | 1.7% CABAT                         |                                   |  |
|                                                                                                                                                  |                         | FANCY VIVID GREEN                  |                                   |  |
|                                                                                                                                                  |                         | Vs 1                               |                                   |  |
|                                                                                                                                                  |                         | 62.7%                              |                                   |  |
|                                                                                                                                                  |                         | 0.1%                               |                                   |  |
|                                                                                                                                                  |                         | Medium To Slightly Thick (Faceted) |                                   |  |
|                                                                                                                                                  |                         | Polished                           |                                   |  |
|                                                                                                                                                  |                         | VERY GOOD                          |                                   |  |
|                                                                                                                                                  |                         | VERY GOOD                          |                                   |  |
|                                                                                                                                                  |                         | NONE                               |                                   |  |
|                                                                                                                                                  |                         | #8 LG5695299                       |                                   |  |
| <p><b>Comments:</b> Crown Diamond was created by High Pressure High temperature (HPHT) growth process. Indications of post-growth treatment.</p> |                         |                                    |                                   |  |