



ELECTRONIC COPY

LG698586283
Report verification at igi.org



April 23, 2025
IGI Report Number **LG698586283**
Description **LABORATORY GROWN DIAMOND**
Shape and Cutting Style **EMERALD CUT**
Measurements **9.51 X 6.97 X 4.50 MM**
GRADING RESULTS
Carat Weight **3.11 CARATS**
Color Grade **FANCY VIVID GREEN**
Clarity Grade **VS 2**

LABORATORY GROWN DIAMOND REPORT

April 23, 2025
IGI Report Number **LG698586283**
Description **LABORATORY GROWN DIAMOND**
Shape and Cutting Style **EMERALD CUT**
Measurements **9.51 X 6.97 X 4.50 MM**

GRADING RESULTS

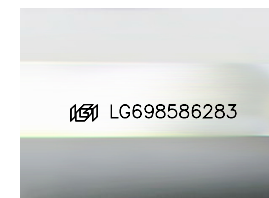
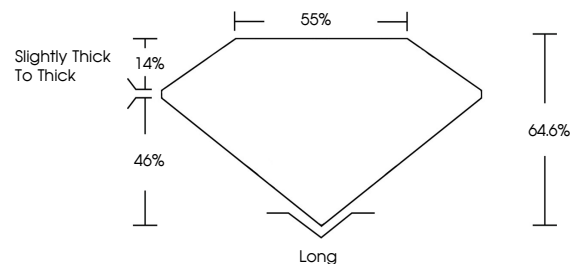
Carat Weight **3.11 CARATS**
Color Grade **FANCY VIVID GREEN**
Clarity Grade **VS 2**

ADDITIONAL GRADING INFORMATION

Polish **EXCELLENT**
Symmetry **EXCELLENT**
Fluorescence **NONE**
Inscription(s) **LG698586283**

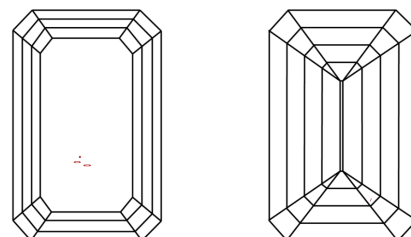
Comments: This Laboratory Grown Diamond was created by High Pressure High Temperature (HPHT) growth process.
Indications of post-growth treatment.

PROPORTIONS



Sample Image Used

CLARITY CHARACTERISTICS



KEY TO SYMBOLS

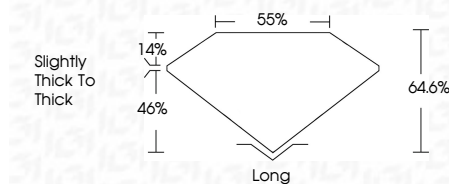
Red symbols indicate internal characteristics.
Green symbols indicate external characteristics.

COLOR

D E F G H I J Faint Very Light Light

CLARITY

IF	VS ¹⁻²	VS ¹⁻²	SI ¹⁻²	I ¹⁻³
Internally Flawless	Very Very Slightly Included	Very Slightly Included	Slightly Included	Included



ADDITIONAL GRADING INFORMATION

Polish **EXCELLENT**
Symmetry **EXCELLENT**
Fluorescence **NONE**
Inscription(s) **LG698586283**
Comments: This Laboratory Grown Diamond was created by High Pressure High Temperature (HPHT) growth process.
Indications of post-growth treatment.



IGI



April 23, 2025
IGI Report No. **LG698586283**
EMERALD CUT
Carat Weight **3.11 CARATS**
Color Grade **FANCY VIVID GREEN**
Clarity Grade **VS 2**
Depth **64.6%**
Table **55%**
Girdle **Slightly thick to thick**
Culet **Long**
Polish **EXCELLENT**
Symmetry **EXCELLENT**
Fluorescence **NONE**
Inscription(s) **LG698586283**

Comments: This Laboratory Grown Diamond was created by High Pressure High Temperature (HPHT) growth process.
Indications of post-growth treatment.