

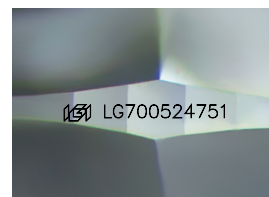
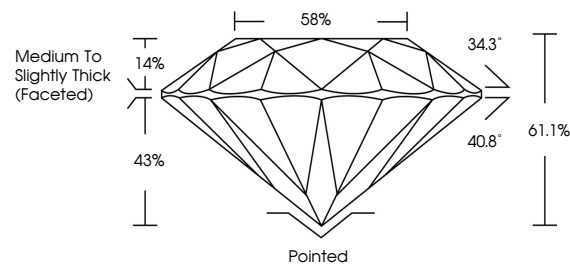


ELECTRONIC COPY

LABORATORY GROWN DIAMOND REPORT

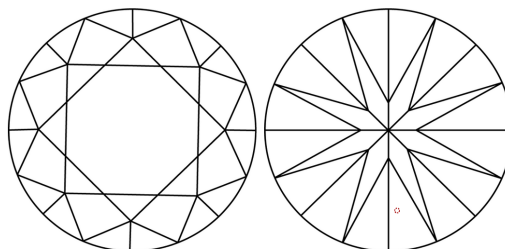
LG700524751
Report verification at lgi.org

PROPORTIONS



Sample Image Used

CLARITY CHARACTERISTICS



KEY TO SYMBOLS

Red symbols indicate internal characteristics.
Green symbols indicate external characteristics.



www.igi.org

LABORATORY GROWN DIAMOND REPORT



April 18, 2025

IGI Report Number **LG700524751**

Description	LABORATORY GROWN DIAMOND
-------------	--------------------------

Shape and Cutting Style **ROUND BRILLIANT**

Measurements 6.58 - 6.61 X 4.03 MM

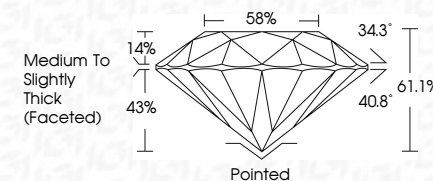
GRADING RESULTS

Carat Weight 1.08 CARAT

Color Grade

Clarity Grade WS 1

Cut Grade **IDEAL**



ADDITIONAL GRADING INFORMATION

Polish **EXCELLENT**Symmetry **EXCELLENT**Fluorescence **NONE**Inscription(s) LG700524751

Comments: HEARTS & ARROWS

As Grown - No indication of post-growth treatment.

This Laboratory Grown Diamond was created by High Pressure High Temperature (HPHT) growth process.

Type II



April 18, 2026	G Report No LG709624751	1.06 CARAT	D	VVS 1	IDEAL	61.1%	88%	Medium to Slightly Thick (Faceted)	Painted	Excellent	NONE	(#) LG709624751	Comments:
Round Brilliant	5.59 - 4.61 X 4.03 MM	Carat Weight	Color Grade	Clarity Grade	Cut Grade	Depth	Table	Girdle	Culet	Symmetry	Fluorescence	Inscriptions(s)	As Grown - No indication of post-growth treatment.
													This Laboratory Grown Diamond was grown by High Pressure High Temperature (HPHT) growth process. Type II

© IGI 2020, International Gemological Institute

FD - 10 20



THIS DOCUMENT WAS PRODUCED WITH THE FOLLOWING SECURITY MEASURES: SPECIAL DOCUMENT PAPER, INK SCREENS, WATERMARK, BACKGROUND DESIGNS, HOLOGRAM AND OTHER SECURITY FEATURES NOT LISTED AND DO EXCEED DOCUMENT SECURITY INDUSTRY GUIDELINES