



ELECTRONIC COPY

LABORATORY GROWN DIAMOND REPORT

April 23, 2025	
IGI Report Number	LG700540609
Description	LABORATORY GROWN DIAMOND
Shape and Cutting Style	ROUND BRILLIANT
Measurements	8.14 - 8.16 X 4.92 MM

GRADING RESULTS

Carat Weight	2.00 CARATS
Color Grade	D
Clarity Grade	VVS 1
Cut Grade	IDEAL

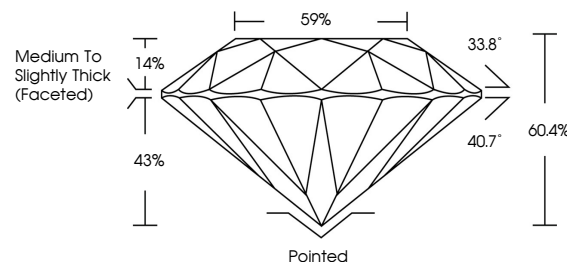
ADDITIONAL GRADING INFORMATION

Polish	EXCELLENT
Symmetry	EXCELLENT
Fluorescence	NONE
Inscription(s)	15 LG700540609

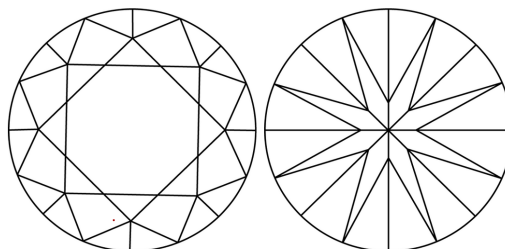
Comments: HEARTS & ARROWS
As Grown - No indication of post-growth treatment.
This Laboratory Grown Diamond was created by High
Pressure High Temperature (HPHT) growth process.
Type II

LG700540609
Report verification at lgi.org

PROPORTIONS

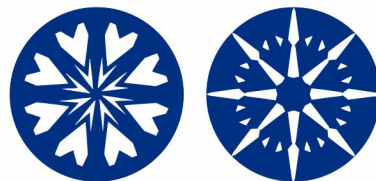


CLARITY CHARACTERISTICS

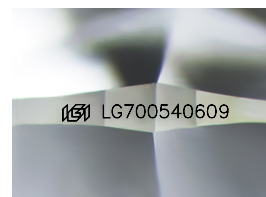


KEY TO SYMBOLS

Red symbols indicate internal characteristics.
Green symbols indicate external characteristics.



www.igi.org



Sample Image Used

COLOR

D E F G H I J Faint Very Light Light

CLARITY

IF WS¹⁻² VS¹⁻² SI¹⁻² |¹⁻³

Internally Flawless	Very Very Slightly Included	Very Slightly Included	Slightly Included	Included
------------------------	--------------------------------	---------------------------	----------------------	----------



© IGI 2020, International Gemological Institute

FD - 10 20

THIS DOCUMENT WAS PRODUCED WITH THE FOLLOWING SECURITY MEASURES: SPECIAL DOCUMENT PAPER, INK SCREENS, WATERMARK BACKGROUND DESIGNS, HOLOGRAM AND OTHER SECURITY FEATURES NOT LISTED AND DO EXCEED DOCUMENT SECURITY INDUSTRY GUIDELINES

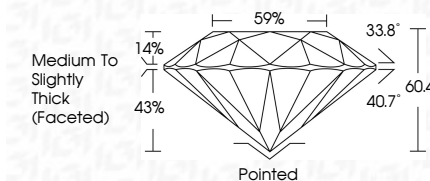
LABORATORY GROWN DIAMOND REPORT



April 23, 2025	
IGI Report Number	LG700540609
Description	LABORATORY GROWN DIAMOND
Shape and Cutting Style	ROUND BRILLIANT
Measurements	8.14 - 8.16 X 4.92 MM

GRADING RESULTS

Carat Weight	2.00 CARATS
Color Grade	D
Clarity Grade	VVS 1
Cut Grade	IDEAL



ADDITIONAL GRADING INFORMATION

Polish	EXCELLENT
Symmetry	EXCELLENT
Fluorescence	NONE
Inscription(s)	151 LG700540605

Comments: HEARTS & ARROWS
As Grown - No indication of post-growth treatment.
This Laboratory Grown Diamond was created by High
Pressure High Temperature (HPHT) growth process.
Type II



IG

April 23, 2025
GI Report No LG700540609

ROUND BRILLIANT	3.14 - 8.16 X 4.92 MM		2.00 CARATS	
	Carat Weight			D
	Color Grade			
	Clarity Grade			VS 1
	Cut Grade			IDEAL
	Depth			60.4%
	Table			59%
	Girdle			Medium To Slightly Thick (Faceted)
	Culet			Pointed
	Polish			EXCELLENT
Symmetry			EXCELLENT	
Fluorescence			NONE	

Comments:
HEARTS & ARROWS
As Grown - No indication of post-growth
treatment.
This Laboratory Grown Diamond was
created by High Pressure High
temperature (HPHT) growth process.