

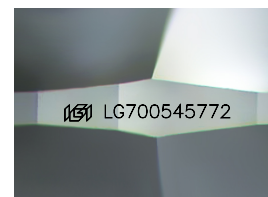
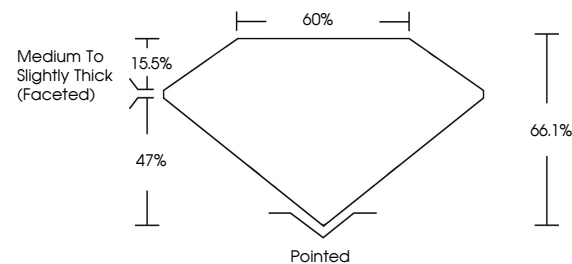


ELECTRONIC COPY

LABORATORY GROWN DIAMOND REPORT

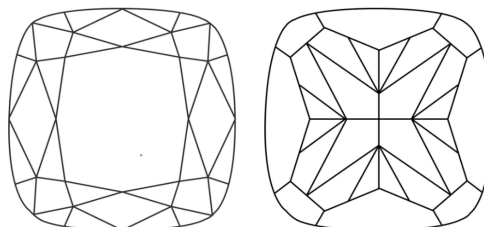
LG700545772
Report verification at igi.org

PROPORTIONS



Sample Image Used

CLARITY CHARACTERISTICS



KEY TO SYMBOLS

Red symbols indicate internal characteristics.
Green symbols indicate external characteristics.

COLOR

D E F G H I J Faint Very Light Light

CLARITY

IF VWS¹⁻² VS¹⁻² SI¹⁻² I¹⁻³

Internally Flawless	Very Very Slightly Included	Very Slightly Included	Slightly Included	Included
---------------------	-----------------------------	------------------------	-------------------	----------

LABORATORY GROWN DIAMOND REPORT



April 24, 2025

IGI Report Number **LG700545772**

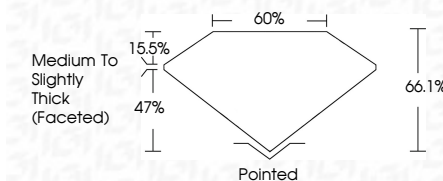
Description	LABORATORY GROWN DIAMOND
-------------	--------------------------

Shape and Cutting Style **SQUARE CUSHION MODIFIED
BRILLIANT**

Measurements **6.89 X 6.87 X 4.54 MM**

GRADING RESULTS

Carat Weight 1.85 CARAT

Color Grade **FANCY INTENSE PINK**Clarity Grade WS 2

ADDITIONAL GRADING INFORMATION

Polish **EXCELLENT**

Symmetry **EXCELLENT**

Fluorescence SLIGHT

Inscription(s) LG700545772

Comments: This Laboratory Grown Diamond was created by Chemical Vapor Deposition (CVD) growth process.

Indications of post-growth treatment.



© IGI 2020, International Gemological Institute

FD - 10 20

www.igi.org



THIS DOCUMENT WAS PRODUCED WITH THE FOLLOWING SECURITY MEASURES: SPECIAL DOCUMENT PAPER, INK SCREENS, WATERMARK, BACKGROUND DESIGNS, HOLOGRAM AND OTHER SECURITY FEATURES NOT LISTED AND DO EXCEED DOCUMENT SECURITY INDUSTRY GUIDELINE

Report Date: 2005	Report No. LG700546772	SQUARE CUSHION MODIFIED BRILLIANT	1.86 CARAT	VVS 2	64.1%	60%	Medium to Slightly Thick (frosted)	Pointed	EXCELLENT	EXCELLENT	SIGHT	169 15700546772
		SQUARE CUSHION MODIFIED BRILLIANT	1.86 X 0.87 X 4.54 MM	FANCY INTENSE PINK	Clarity Grade	Depth	Table	Color	Polish	Symmetry	Fluorescence	Inscriptions(s)
			Carat Weight	Color Grade	Clarity Grade	Depth	Table	Color	Polish	Symmetry	Fluorescence	Inscriptions(s)