



ELECTRONIC COPY

LABORATORY GROWN DIAMOND REPORT

LG700573428
Report verification at igi.org

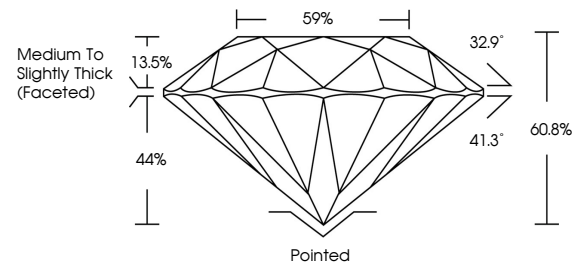
April 26, 2025	
IGI Report Number	LG700573428
Description	LABORATORY GROWN DIAMOND
Shape and Cutting Style	ROUND BRILLIANT
Measurements	6.96 - 6.99 X 4.24 MM
GRADING RESULTS	
Carat Weight	1.26 CARAT
Color Grade	D
Clarity Grade	VS 1
Cut Grade	IDEAL

ADDITIONAL GRADING INFORMATION

Polish	EXCELLENT
Symmetry	EXCELLENT
Fluorescence	NONE
Inscription(s)	 LG700573428

Comments: This Laboratory Grown Diamond was created by Chemical Vapor Deposition (CVD) growth process.
Type IIa

PROPORTIONS



Sample Image Used

COLOR

D E F G H I J Faint Very Light Light

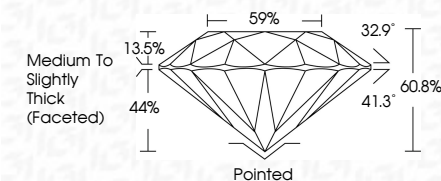
CLARITY

IF	VS ¹⁻²	VS ¹⁻²	SI ¹⁻²	I ¹⁻³
Internally Flawless	Very Very Slightly Included	Very Slightly Included	Slightly Included	Included

LABORATORY GROWN DIAMOND REPORT



April 26, 2025	
IGI Report Number	LG700573428
Description	LABORATORY GROWN DIAMOND
Shape and Cutting Style	ROUND BRILLIANT
Measurements	6.96 - 6.99 X 4.24 MM
GRADING RESULTS	
Carat Weight	1.26 CARAT
Color Grade	D
Clarity Grade	VS 1
Cut Grade	IDEAL



ADDITIONAL GRADING INFORMATION

Polish	EXCELLENT
Symmetry	EXCELLENT
Fluorescence	NONE
Inscription(s)	 LG700573428
<p>Comments: This Laboratory Grown Diamond was created by Chemical Vapor Deposition (CVD) growth process.</p> <p>Type IIa</p>	



IG



© IGI 2020, International Gemological Institute

FD - 10 20

www.igi.org



THIS DOCUMENT WAS PRODUCED WITH THE FOLLOWING SECURITY MEASURES: SPECIAL DOCUMENT PAPER, INK SCREENS, WATERMARK BACKGROUND DESIGNS, HOLOGRAM AND OTHER SECURITY FEATURES NOT LISTED AND DO EXCEED DOCUMENT SECURITY INDUSTRY GUIDELINES

April 26, 2025
GI Report No LG700573428

IGI Report No LG70
DO AND BRILLIANT

6.96 - 6.99 X 4.24 MM

Carat Weight 1.26 CARAT

D
Color Grade

Clarity Grade	VS 1
VS 1	

	IDEAL
Cut Grade	
Depth	60.00%

Dep III	60.6%
Table	59%

Girdle

IIIICK (Paceler)

Quiet	Painted
Polish	EXCELLENT

Symmetry

Fluorescence	None
Inscription(s)	1681 G700573428

© 2004 Blackwell Publishing Ltd *Journal of Internal Medicine* 255: 103–112

Comments:
This Laboratory Grown Diamond was

created by Chemical Vapor Deposition (CVD) growth process.

Type IIa