



**ELECTRONIC COPY**

LG700573960  
Report verification at igi.org



April 24, 2025

IGI Report Number **LG700573960**

Description **LABORATORY GROWN DIAMOND**

Shape and Cutting Style **ROUND BRILLIANT**

Measurements **6.92 - 6.96 X 4.02 MM**

**GRADING RESULTS**

Carat Weight **1.23 CARAT**

Color Grade **FANCY VIVID GREEN**

Clarity Grade **VS 2**

Cut Grade **GOOD**

April 24, 2025

IGI Report Number **LG700573960**

Description **LABORATORY GROWN DIAMOND**

Shape and Cutting Style **ROUND BRILLIANT**

Measurements **6.92 - 6.96 X 4.02 MM**

**GRADING RESULTS**

Carat Weight **1.23 CARAT**

Color Grade **FANCY VIVID GREEN**

Clarity Grade **VS 2**

Cut Grade **GOOD**

**ADDITIONAL GRADING INFORMATION**

Polish **VERY GOOD**

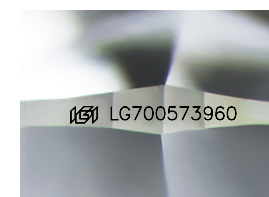
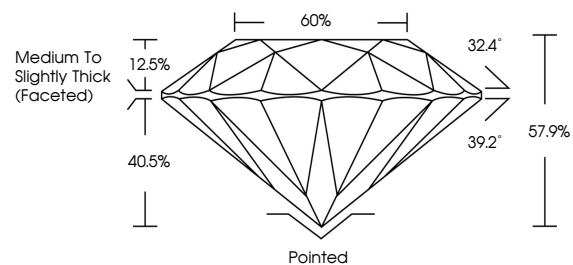
Symmetry **GOOD**

Fluorescence **NONE**

Inscription(s) **IGI LG700573960**

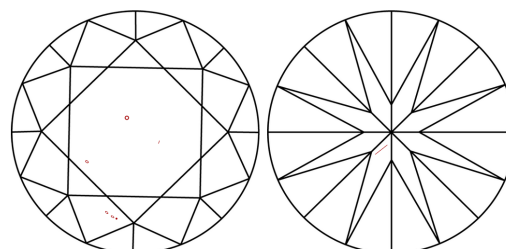
Comments: This Laboratory Grown Diamond was created by High Pressure High Temperature (HPHT) growth process. Indications of post-growth treatment.

**PROPORTIONS**



Sample Image Used

**CLARITY CHARACTERISTICS**



**KEY TO SYMBOLS**

Red symbols indicate internal characteristics.  
Green symbols indicate external characteristics.

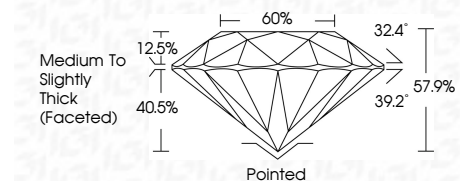
**COLOR**

D E F G H I J Faint Very Light Light

**CLARITY**

IF VS<sup>1-2</sup> VS<sup>1-2</sup> SI<sup>1-2</sup> I<sup>1-3</sup>

Internally Flawless Very Very Slightly Included Very Slightly Included Slightly Included Included



**ADDITIONAL GRADING INFORMATION**

Polish **VERY GOOD**

Symmetry **GOOD**

Fluorescence **NONE**

Inscription(s) **IGI LG700573960**

Comments: This Laboratory Grown Diamond was created by High Pressure High Temperature (HPHT) growth process. Indications of post-growth treatment.



April 24, 2025  
IGI Report No LG700573960  
ROUND BRILLIANT  
6.92 - 6.96 X 4.02 MM  
1.23 CARAT  
FANCY VIVID GREEN  
VS 2  
GOOD  
57.9%  
60%  
Medium To Slightly Thick (Faceted)  
Pointed  
VERY GOOD  
GOOD  
NONE  
IGI LG700573960

Cutler  
Polish  
Symmetry  
Fluorescence  
Inscription(s)

Comments: This Laboratory Grown Diamond was created by High Pressure High Temperature (HPHT) growth process. Indications of post-growth treatment.