



**INTERNATIONAL
GEMOLOGICAL
INSTITUTE**

ELECTRONIC COPY

LG700576101
Report verification at igi.org

LABORATORY GROWN DIAMOND REPORT



April 21, 2025

IGI Report Number **LG700576101**

| | |
|-------------|--------------------------|
| Description | LABORATORY GROWN DIAMOND |
|-------------|--------------------------|

Shape and Cutting Style **CUSHION MODIFIED
BRILLIANT**

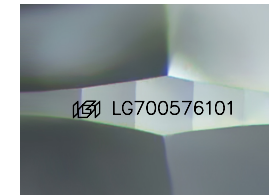
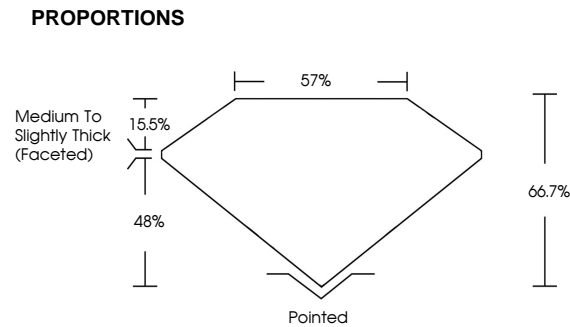
Measurements **7.92 X 5.86 X 3.91 MM**

GRADING RESULTS

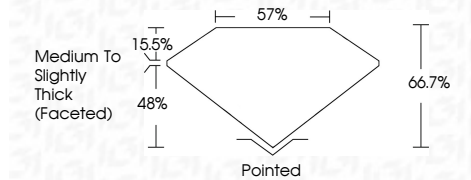
Carat Weight **1.38 CARAT**

| | |
|-------------|---|
| Color Grade | E |
|-------------|---|

Clarity Grade VS 1



Sample Image Used



COLOR

D E F G H I J Faint Very Light Light

CLARITY

IF WVS¹⁻² VS¹⁻² SI¹⁻² |¹⁻³

| | | | | |
|------------------------|--------------------------------|---------------------------|----------------------|----------|
| Internally Flawless | Very Very Slightly Included | Very Slightly Included | Slightly Included | Included |
|------------------------|--------------------------------|---------------------------|----------------------|----------|



© IGI 2020, International Gemmological Institute

FD - 10 20

www.igi.org



THIS DOCUMENT WAS PRODUCED WITH THE FOLLOWING SECURITY MEASURES: SPECIAL DOCUMENT PAPER, INK SCREENS, WATERMARK, BACKGROUND DESIGNS, HOLOGRAM AND OTHER SECURITY FEATURES NOT LISTED AND DO EXCEED DOCUMENT SECURITY INDUSTRY GUIDELINES



| | | |
|----------------------------|----------------|--|
| April 21, 2025 | Carat Weight | 1.38 CARAT |
| Report No. LG70076101 | Color Grade | E |
| CUSHION MODIFIED BRILLIANT | Clarity Grade | VS 1 |
| | Depth | 66.7% |
| | Table | 57% |
| | Girdle | Medium To Slightly Thick (rounded) |
| | Culet | Pointed |
| | Polish | EXCELLENT |
| | Symmetry | EXCELLENT |
| | Fluorescence | NONE |
| | Inscription(s) | #61 LG70076101 |
| | Comments: | This Laboratory Grown Diamond was created by Chemical Vapor Deposition (CVD) growth process. |
| | Type IIa | |