



**ELECTRONIC COPY**

LG700592985  
Report verification at [igi.org](http://igi.org)



April 23, 2025

IGI Report Number **LG700592985**

Description **LABORATORY GROWN DIAMOND**

Shape and Cutting Style **ROUND MIXED CUT**

Measurements **6.44 - 6.45 X 3.92 MM**

**GRADING RESULTS**

Carat Weight **1.12 CARAT**

Color Grade **E**

Clarity Grade **VVS 2**

April 23, 2025

IGI Report Number **LG700592985**

Description **LABORATORY GROWN DIAMOND**

Shape and Cutting Style **ROUND MIXED CUT**

Measurements **6.44 - 6.45 X 3.92 MM**

**GRADING RESULTS**

Carat Weight **1.12 CARAT**

Color Grade **E**

Clarity Grade **VVS 2**

**ADDITIONAL GRADING INFORMATION**

Polish **VERY GOOD**

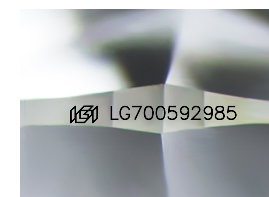
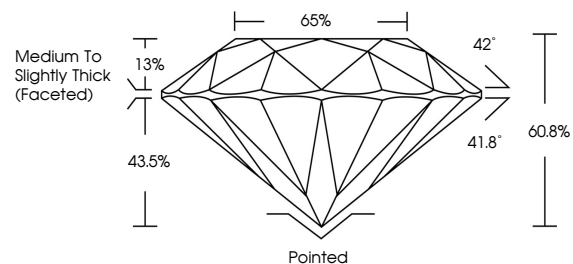
Symmetry **VERY GOOD**

Fluorescence **NONE**

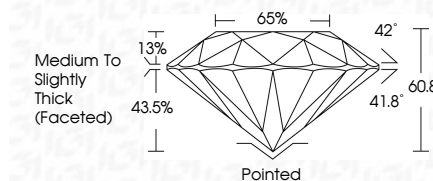
Inscription(s) **LG700592985**

Comments: This Laboratory Grown Diamond was created by Chemical Vapor Deposition (CVD) growth process.  
Type IIa

**PROPORTIONS**



Sample Image Used



**COLOR**

D E F G H I J Faint Very Light Light

**CLARITY**

IF	VS <sup>1-2</sup>	VS <sup>1-2</sup>	SI <sup>1-2</sup>	I <sup>1-3</sup>
Internally Flawless	Very Very Slightly Included	Very Slightly Included	Slightly Included	Included

**ADDITIONAL GRADING INFORMATION**

Polish **VERY GOOD**

Symmetry **VERY GOOD**

Fluorescence **NONE**

Inscription(s) **LG700592985**

Comments: This Laboratory Grown Diamond was created by Chemical Vapor Deposition (CVD) growth process.  
Type IIa



**IGI**



April 23, 2025  
IGI Report No LG700592985  
**ROUND MIXED CUT**  
6.44 - 6.45 X 3.92 MM  
1.12 CARAT  
E  
VVS 2  
60.8%  
65%  
Medium to Slightly Thick (Faceted)Pointed  
Polished  
VERY GOOD  
VERY GOOD  
NONE  
None  
 LG700592985

Comments: This Laboratory Grown Diamond was created by Chemical Vapor Deposition (CVD) growth process.  
Type IIa