

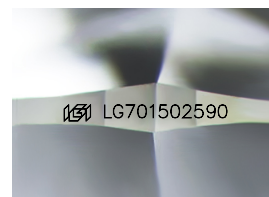
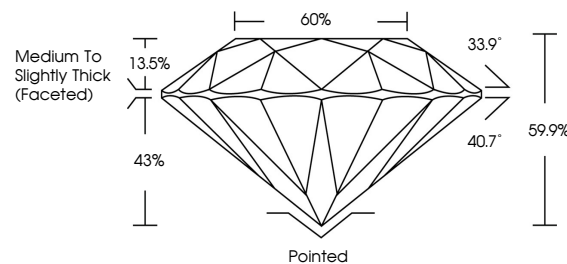


ELECTRONIC COPY

LABORATORY GROWN DIAMOND REPORT

LG701502590
Report verification at igi.org

PROPORTIONS



Sample Image Used

CLARITY CHARACTERISTICS



KEY TO SYMBOLS

Red symbols indicate internal characteristics.
Green symbols indicate external characteristics.



www.igi.org

LABORATORY GROWN DIAMOND REPORT



April 24, 2025

IGI Report Number **LG701502590**

| | |
|-------------|--------------------------|
| Description | LABORATORY GROWN DIAMOND |
|-------------|--------------------------|

Shape and Cutting Style **ROUND BRILLIANT**

| | |
|--------------|-----------------------|
| Measurements | 8.35 - 8.40 X 5.02 MM |
|--------------|-----------------------|

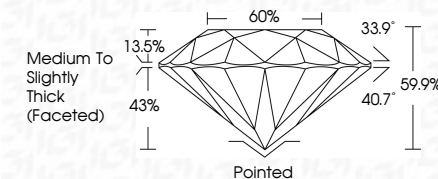
GRADING RESULTS

Carat Weight **2.16 CARATS**

Color Grade E

Clarity Grade **INTERNALLY FLAWLESS**

Cut Grade **IDEAL**



ADDITIONAL GRADING INFORMATION

Polish **EXCELLENT**Symmetry **EXCELLENT**Fluorescence **NONE**Inscription(s) LG701502590

Comments: HEARTS & ARROWS

As Grown - No indication of post-growth treatment.

This Laboratory Grown Diamond was created by High Pressure High Temperature (HPHT) growth process.

Type II



IG

| | |
|--|------------------------------------|
| | April 24, 2025 |
| Gf Report No LG701802950 | |
| ROUND BRILLIANT | |
| 3.35 - 3.40 X 5.02 MM | |
| Color Weight | 2.16 CARATS |
| Color Grade | E |
| Clarity Grade | IF |
| Cut Grade | IDEAL |
| Depth | 59.9% |
| Table | 60% |
| Girdle | Medium to Slightly Thick (faceted) |
| Culet | Poished |
| Symmetry | EXCELLENT |
| Fluorescence | NONE |
| Inscriptions(s) | #g1 LG701802950 |
| Comments: | |
| HEARTS & ARROWS As Grown - No indication of post-growth treatment. | |
| This Laboratory Grown Diamond was synthesized by CVD techniques at High temperature (HPHT) growth process. Type II | |

© IGI 2020, International Gemological Institute

FD - 10 20



THIS DOCUMENT WAS PRODUCED WITH THE FOLLOWING SECURITY MEASURES: SPECIAL DOCUMENT PAPER, INK SCREENS, WATERMARK, BACKGROUND DESIGNS, HOLOGRAM AND OTHER SECURITY FEATURES NOT LISTED AND DO EXCEED DOCUMENT SECURITY INDUSTRY GUIDELINES