



**ELECTRONIC COPY**

## LABORATORY GROWN DIAMOND REPORT

April 24, 2025	
IGI Report Number	LG702512945
Description	LABORATORY GROWN DIAMOND
Shape and Cutting Style	ROUND BRILLIANT
Measurements	6.42 - 6.47 X 3.95 MM

## GRADING RESULTS

Carat Weight	1.02 CARAT
Color Grade	D
Clarity Grade	VVS 1
Cut Grade	IDEAL

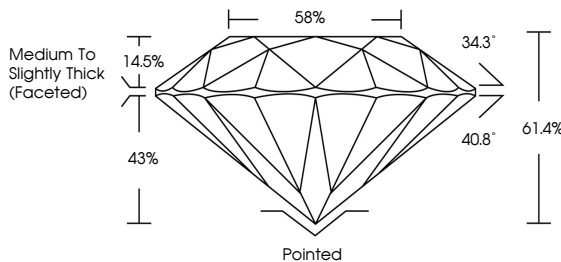
### ADDITIONAL GRADING INFORMATION

Polish	EXCELLENT
Symmetry	EXCELLENT
Fluorescence	NONE
Inscription(s)	 LG702512945

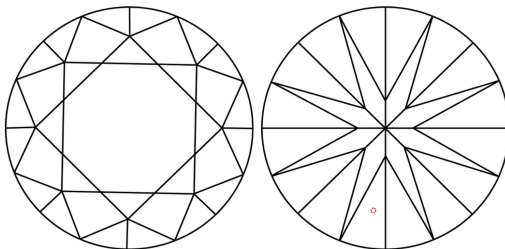
Comments: HEARTS & ARROWS  
As Grown - No indication of post-growth treatment.  
This Laboratory Grown Diamond was created by High  
Pressure High Temperature (HPHT) growth process.  
Type II

LG702512945  
Report verification at [igi.org](https://igi.org)

## PROPORTIONS

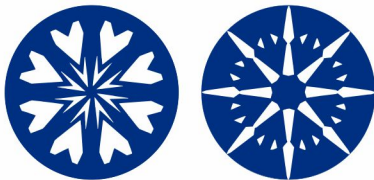


## CLARITY CHARACTERISTICS

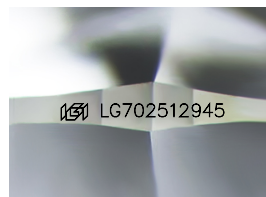


## KEY TO SYMBOLS

Red symbols indicate internal characteristics.  
Green symbols indicate external characteristics.



**www.igi.org**



Sample Image Used

## COLOR

D E F G H I J Faint Very Light Light

## CLARITY

IF                      VWS<sup>1-2</sup>                      VS<sup>1-2</sup>                      SI<sup>1-2</sup>                      |<sup>1-3</sup>

Internally Flawless	Very Very Slightly Included	Very Slightly Included	Slightly Included	Included
------------------------	--------------------------------	---------------------------	----------------------	----------



© IGI 2020, International Gemological Institute

FD - 10 20



THIS DOCUMENT WAS PRODUCED WITH THE FOLLOWING SECURITY MEASURES: SPECIAL DOCUMENT PAPER, INK SCREENS, WATERMARK BACKGROUND DESIGNS, HOLOGRAM AND OTHER SECURITY FEATURES NOT LISTED AND DO EXCEED DOCUMENT SECURITY INDUSTRY GUIDELINES

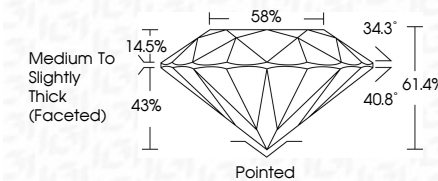
## LABORATORY GROWN DIAMOND REPORT



April 24, 2025	
IGI Report Number	LG702512945
Description	LABORATORY GROWN DIAMOND
Shape and Cutting Style	ROUND BRILLIANT
Measurements	6.42 - 6.47 X 3.95 MM

## GRADING RESULTS

Carat Weight	1.02 CARAT
Color Grade	D
Clarity Grade	VVS 1
Cut Grade	IDEAL



### ADDITIONAL GRADING INFORMATION

Polish	EXCELLENT
Symmetry	EXCELLENT
Fluorescence	NONE
Inscription(s)	<del>153</del> LG702512945

Comments: HEARTS & ARROWS  
As Grown - No indication of post-growth treatment.  
This Laboratory Grown Diamond was created by High  
Pressure High Temperature (HPHT) growth process.  
Type II



IG

April 24, 2025  
IGI Report No LG702512945  
ROUND BRILLIANT

<b>6.42 - 6.47 X 3.95 MM</b>	<b>1.02 CARAT</b>	<b>D</b>
Carat Weight	VVS 1	IDEAL
Color Grade	61.4%	56%
Clarity Grade	Medium to slightly Thick (faceted)	
Cut Grade	Pointed	
Depth	EXCELLENT	
Table	EXCELLENT	
Girdle	NONE	
Culet	NONE	
Polish	EXCELLENT	
Symmetry	EXCELLENT	
Fluorescence	NONE	
Comments	4441 1270510204	

**Comments:**  
**HEARTS & ARROWS**  
As Grown - No Indication of post-growth treatment  
This Laboratory Grown Diamond was created by High Pressure High Temperature (HPHT) growth process.