



ELECTRONIC COPY

LG702570361
Report verification at igi.org



April 30, 2025

IGI Report Number **LG702570361**

Description **LABORATORY GROWN DIAMOND**

Shape and Cutting Style **ROUND BRILLIANT**

Measurements **11.30 - 11.37 X 6.95 MM**

GRADING RESULTS

Carat Weight **5.42 CARATS**

Color Grade **E**

Clarity Grade **VVS 2**

Cut Grade **IDEAL**

April 30, 2025
IGI Report Number **LG702570361**
Description **LABORATORY GROWN DIAMOND**
Shape and Cutting Style **ROUND BRILLIANT**
Measurements **11.30 - 11.37 X 6.95 MM**

GRADING RESULTS

Carat Weight **5.42 CARATS**

Color Grade **E**

Clarity Grade **VVS 2**

Cut Grade **IDEAL**

ADDITIONAL GRADING INFORMATION

Polish **EXCELLENT**

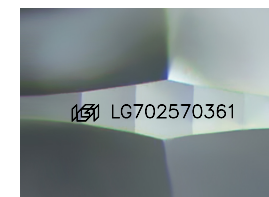
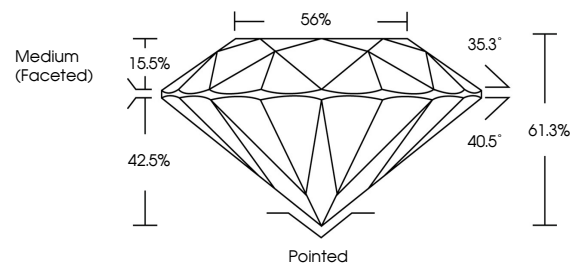
Symmetry **EXCELLENT**

Fluorescence **NONE**

Inscription(s) **IGI LG702570361**

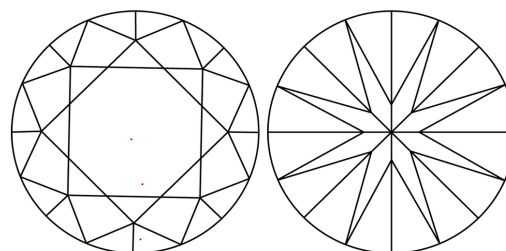
Comments: This Laboratory Grown Diamond was created by Chemical Vapor Deposition (CVD) growth process.
Type IIa

PROPORTIONS



Sample Image Used

CLARITY CHARACTERISTICS



KEY TO SYMBOLS

Red symbols indicate internal characteristics.
Green symbols indicate external characteristics.

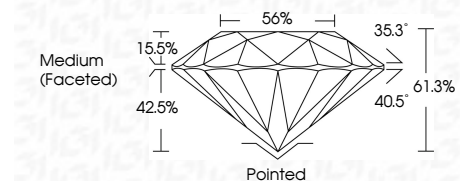
COLOR

D E F G H I J Faint Very Light Light

CLARITY

IF WS¹⁻² VS¹⁻² SI¹⁻² I¹⁻³

Internally Flawless Very Very Slightly Included Very Slightly Included Slightly Included Included



ADDITIONAL GRADING INFORMATION

Polish **EXCELLENT**

Symmetry **EXCELLENT**

Fluorescence **NONE**

Inscription(s) **IGI LG702570361**

Comments: This Laboratory Grown Diamond was created by Chemical Vapor Deposition (CVD) growth process.
Type IIa



IGI



April 30, 2025	IGI Report No LG702570361	5.42 CARATS	E	Pointed	EXCELLENT	EXCELLENT	None	IGI LG702570361
ROUND BRILLIANT	11.30 - 11.37 X 6.95 MM	Color Grade	VVS 2	Depth	IDEAL	61.3%	Medium (Faceted)	None
		Clarity Grade	VVS 2	Girdle	56%			
		Cut Grade	IDEAL	Polish	EXCELLENT			
				Symmetry	EXCELLENT			
				Fluorescence	NONE			
				Inscription(s)	IGI LG702570361			

Comments: This Laboratory Grown Diamond was created by Chemical Vapor Deposition (CVD) growth process.
Type IIa