



ELECTRONIC COPY

LABORATORY GROWN DIAMOND REPORT

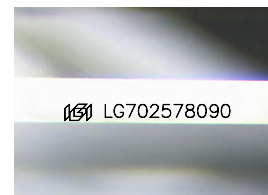
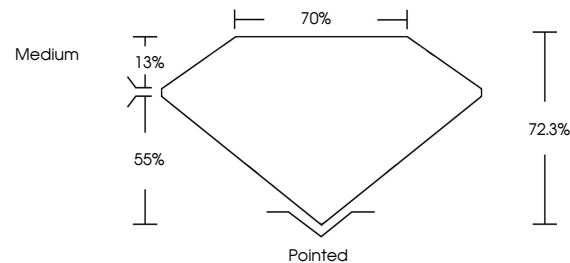
LG702578090
Report verification at igi.org

April 29, 2025	
IGI Report Number	LG702578090
Description	LABORATORY GROWN DIAMOND
Shape and Cutting Style	PRINCESS CUT
Measurements	6.99 X 6.93 X 5.01 MM
GRADING RESULTS	
Carat Weight	2.14 CARATS
Color Grade	E
Clarity Grade	VVS 2

ADDITIONAL GRADING INFORMATION

Polish	EXCELLENT
Symmetry	EXCELLENT
Fluorescence	NONE
Inscription(s)	 LG702578090
Comments: This Laboratory Grown Diamond was created by Chemical Vapor Deposition (CVD) growth process.	
Type IIa	

PROPORTIONS



Sample Image Used

COLOR

D E F G H I J Faint Very Light Light

CLARITY


IF	VS ¹⁻²	VS ¹⁻²	SI ¹⁻²	I ¹⁻³
Internally Flawless	Very Very Slightly Included	Very Slightly Included	Slightly Included	Included

LABORATORY GROWN DIAMOND REPORT



April 29, 2025	
IGI Report Number	LG702578090
Description	LABORATORY GROWN DIAMOND
Shape and Cutting Style	PRINCESS CUT
Measurements	6.99 X 6.93 X 5.01 MM
GRADING RESULTS	
Carat Weight	2.14 CARATS
Color Grade	E
Clarity Grade	VVS 2

ADDITIONAL GRADING INFORMATION

Polish	EXCELLENT
Symmetry	EXCELLENT
Fluorescence	NONE
Inscription(s)	 LG702578090
<p>Comments: This Laboratory Grown Diamond was created by Chemical Vapor Deposition (CVD) growth process.</p> <p>Type IIa</p>	



© IGI 2020, International Gemological Institute

FD - 10 20



THIS DOCUMENT WAS PRODUCED WITH THE FOLLOWING SECURITY MEASURES: SPECIAL DOCUMENT PAPER, INK SCREENS, WATERMARK, BACKGROUND DESIGNS, HOLOGRAM AND OTHER SECURITY FEATURES NOT LISTED AND DO EXCEED DOCUMENT SECURITY INDUSTRY GUIDELINES

www.igi.org

April 29, 2025
 IGI Report No LG702578090
 PRINCESS CLIT

9.99 X 6.93 X 5.01 MM	2.14 CARATS
Carat Weight	VVS 2
Color Grade	72-8%
Cutty Grade	70%
Depth	Medium
Table	Poined
Girdle	EXCELLENT
Culet	EXCELLENT
Foish	NONE
Symmetry	NONE
Fluorescence	None (enhancement)

Comments:
This Laboratory Grown Diamond was created by Chemical Vapor Deposition (CVD) growth process.