



ELECTRONIC COPY

LABORATORY GROWN DIAMOND REPORT

May 8, 2025  
IGI Report Number LG702581003  
Description LABORATORY GROWN DIAMOND  
Shape and Cutting Style CUT CORNERED RECTANGULAR MODIFIED BRILLIANT  
Measurements 10.28 X 7.16 X 4.70 MM

GRADING RESULTS

Carat Weight 3.00 CARATS  
Color Grade F  
Clarity Grade VVS 2

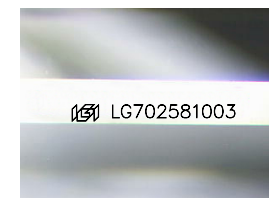
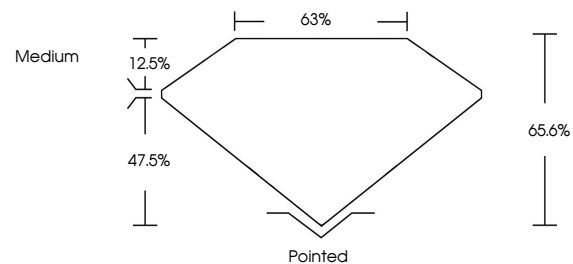
ADDITIONAL GRADING INFORMATION

Polish EXCELLENT  
Symmetry VERY GOOD  
Fluorescence NONE

Inscription(s) LG702581003

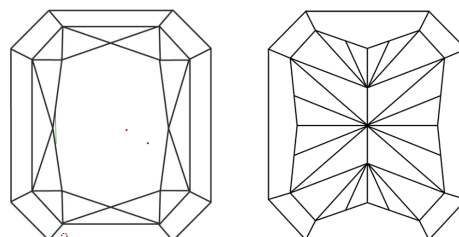
Comments: This Laboratory Grown Diamond was created by Chemical Vapor Deposition (CVD) growth process.  
Type IIa

PROPORTIONS



Sample Image Used

CLARITY CHARACTERISTICS



KEY TO SYMBOLS

Red symbols indicate internal characteristics.  
Green symbols indicate external characteristics.

COLOR

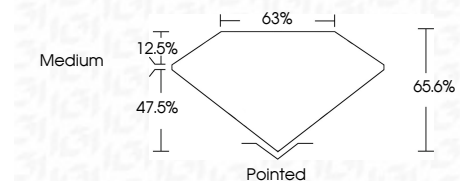
D E F G H I J Faint Very Light Light

CLARITY

IF WS<sup>1-2</sup> VS<sup>1-2</sup> SI<sup>1-2</sup> I<sup>1-3</sup>  
Internally Flawless Very Very Slightly Included Very Slightly Included Slightly Included Included



May 8, 2025  
IGI Report Number LG702581003  
Description LABORATORY GROWN DIAMOND  
Shape and Cutting Style CUT CORNERED RECTANGULAR MODIFIED BRILLIANT  
Measurements 10.28 X 7.16 X 4.70 MM  
GRADING RESULTS  
Carat Weight 3.00 CARATS  
Color Grade F  
Clarity Grade VVS 2



ADDITIONAL GRADING INFORMATION

Polish EXCELLENT  
Symmetry VERY GOOD  
Fluorescence NONE  
Inscription(s) LG702581003  
Comments: This Laboratory Grown Diamond was created by Chemical Vapor Deposition (CVD) growth process.  
Type IIa



IGI



May 8, 2025  
IGI Report No LG702581003  
CUT CORNERED RECT. MODIFIED BRILLIANT  
10.28 X 7.16 X 4.70 MM  
3.00 CARATS  
F  
VVS 2  
65.6%  
63%  
Medium  
Pointed  
EXCELLENT  
VERY GOOD  
NONE  
IGI LG702581003  
Comments: This Laboratory Grown Diamond was created by Chemical Vapor Deposition (CVD) growth process.  
Type IIa