



ELECTRONIC COPY

LG704590305
Report verification at igi.org



July 28, 2025

IGI Report Number **LG704590305**

Description **LABORATORY GROWN DIAMOND**

Shape and Cutting Style **HEART MODIFIED BRILLIANT**

Measurements **6.31 X 6.90 X 3.70 MM**

GRADING RESULTS

Carat Weight **1.19 CARAT**

Color Grade **FANCY INTENSE BLUE**

Clarity Grade **VVS 2**

July 28, 2025

IGI Report Number **LG704590305**

Description **LABORATORY GROWN DIAMOND**

Shape and Cutting Style **HEART MODIFIED BRILLIANT**

Measurements **6.31 X 6.90 X 3.70 MM**

GRADING RESULTS

Carat Weight **1.19 CARAT**

Color Grade **FANCY INTENSE BLUE**

Clarity Grade **VVS 2**

ADDITIONAL GRADING INFORMATION

Polish **EXCELLENT**

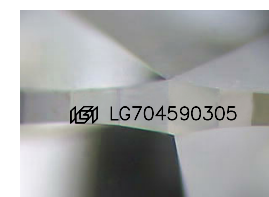
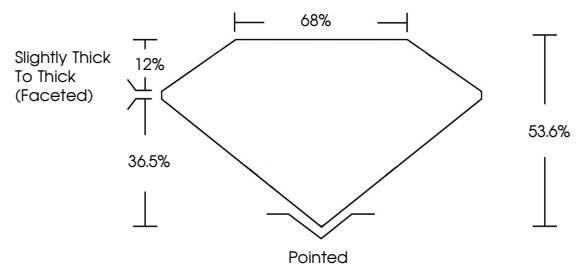
Symmetry **EXCELLENT**

Fluorescence **NONE**

Inscription(s) **IGI LG704590305**

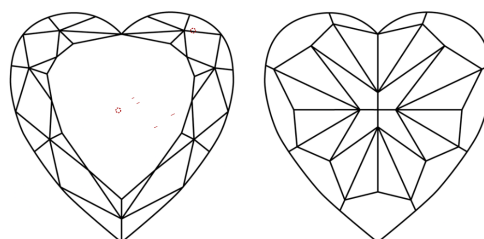
Comments: This Laboratory Grown Diamond was created by High Pressure High Temperature (HPHT) growth process. Indications of post-growth treatment.

PROPORTIONS



Sample Image Used

CLARITY CHARACTERISTICS



KEY TO SYMBOLS

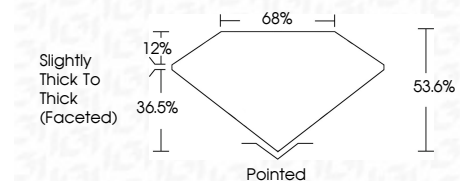
Red symbols indicate internal characteristics.
Green symbols indicate external characteristics.

COLOR

D E F G H I J Faint Very Light Light

CLARITY

IF	VS ¹⁻²	VS ¹⁻²	SI ¹⁻²	I ¹⁻³
Internally Flawless	Very Very Slightly Included	Very Slightly Included	Slightly Included	Included



ADDITIONAL GRADING INFORMATION

Polish **EXCELLENT**

Symmetry **EXCELLENT**

Fluorescence **NONE**

Inscription(s) **IGI LG704590305**

Comments: This Laboratory Grown Diamond was created by High Pressure High Temperature (HPHT) growth process. Indications of post-growth treatment.



July 28, 2025	1.19 CARAT
IGI Report No LG704590305	FANCY INTENSE BLUE
HEART MODIFIED BRILLIANT	VVS 2
6.31 X 6.90 X 3.70 MM	53.6%
Carat Weight	36.5%
Color Grade	Slightly Thick To Thick (Faceted)
Clarity Grade	Pointed
Depth	EXCELLENT
Table	EXCELLENT
Grailes	NONE
Culet	NONE
Polish	EXCELLENT
Symmetry	EXCELLENT
Fluorescence	NONE
Inscription(s)	IGI LG704590305

Comments: This Laboratory Grown Diamond was created by High Pressure High Temperature (HPHT) growth process. Indications of post-growth treatment.