



**ELECTRONIC COPY**

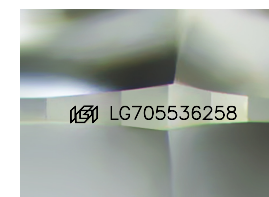
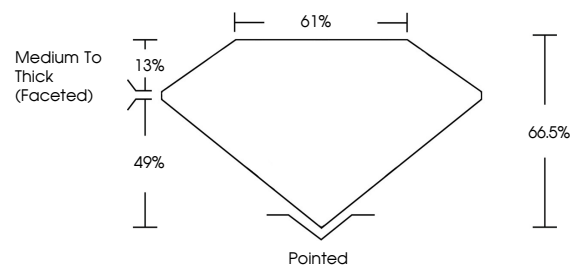
LG705536258  
Report verification at igi.org



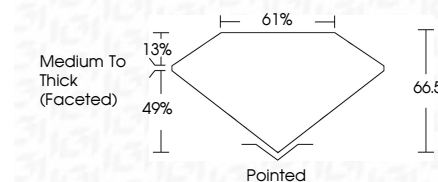
May 15, 2025  
IGI Report Number **LG705536258**  
Description **LABORATORY GROWN DIAMOND**  
Shape and Cutting Style **CUSHION MODIFIED BRILLIANT**  
Measurements **9.66 X 7.61 X 5.06 MM**  
**GRADING RESULTS**  
Carat Weight **3.10 CARATS**  
Color Grade **FANCY VIVID PINK**  
Clarity Grade **VS 2**

May 15, 2025  
IGI Report Number **LG705536258**  
Description **LABORATORY GROWN DIAMOND**  
Shape and Cutting Style **CUSHION MODIFIED BRILLIANT**  
Measurements **9.66 X 7.61 X 5.06 MM**  
**GRADING RESULTS**  
Carat Weight **3.10 CARATS**  
Color Grade **FANCY VIVID PINK**  
Clarity Grade **VS 2**

**PROPORTIONS**



Sample Image Used



**ADDITIONAL GRADING INFORMATION**

Polish **EXCELLENT**  
Symmetry **EXCELLENT**  
Fluorescence **STRONG**  
Inscription(s) **IGI LG705536258**

Comments: This Laboratory Grown Diamond was created by Chemical Vapor Deposition (CVD) growth process. Indications of post-growth treatment.

**ADDITIONAL GRADING INFORMATION**

Polish **EXCELLENT**  
Symmetry **EXCELLENT**  
Fluorescence **STRONG**  
Inscription(s) **IGI LG705536258**

Comments: This Laboratory Grown Diamond was created by Chemical Vapor Deposition (CVD) growth process. Indications of post-growth treatment.

**COLOR**

D E F G H I J Faint Very Light Light

**CLARITY**

IF	VS <sup>1-2</sup>	VS <sup>1-2</sup>	SI <sup>1-2</sup>	I <sup>1-3</sup>
Internally Flawless	Very Very Slightly Included	Very Slightly Included	Slightly Included	Included



**IGI**



May 15, 2025  
IGI Report No **LG705536258**  
**CUSHION MODIFIED BRILLIANT**  
**3.10 CARATS**  
Carat Weight **FANCY VIVID PINK**  
Color Grade **VS 2**  
Depth **66.5%**  
Table **61%**  
Girdle **Medium To Thick (Faceted)**  
Culet **Pointed**  
Polish **EXCELLENT**  
Symmetry **EXCELLENT**  
Fluorescence **STRONG**  
Inscription(s) **IGI LG705536258**  
Comments: This Laboratory Grown Diamond was created by Chemical Vapor Deposition (CVD) growth process. Indications of post-growth treatment.