



**ELECTRONIC COPY**

LG705540340  
Report verification at igi.org



May 7, 2025  
IGI Report Number **LG705540340**  
Description **LABORATORY GROWN DIAMOND**  
Shape and Cutting Style **CUT CORNERED  
RECTANGULAR MIXED CUT**  
Measurements **8.78 X 5.82 X 3.90 MM**  
**GRADING RESULTS**  
Carat Weight **2.07 CARATS**  
Color Grade **E**  
Clarity Grade **VVS 1**

May 7, 2025  
IGI Report Number **LG705540340**  
Description **LABORATORY GROWN DIAMOND**  
Shape and Cutting Style **CUT CORNERED RECTANGULAR  
MIXED CUT**  
Measurements **8.78 X 5.82 X 3.90 MM**

**GRADING RESULTS**

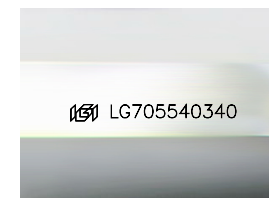
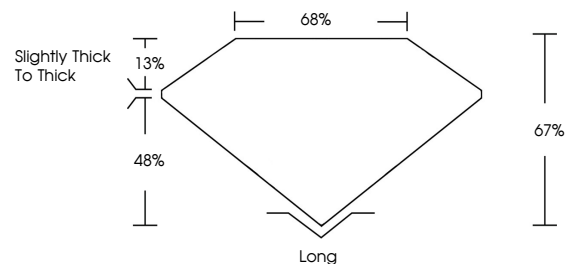
Carat Weight **2.07 CARATS**  
Color Grade **E**  
Clarity Grade **VVS 1**

**ADDITIONAL GRADING INFORMATION**

Polish **EXCELLENT**  
Symmetry **EXCELLENT**  
Fluorescence **NONE**  
Inscription(s) **IGI LG705540340**

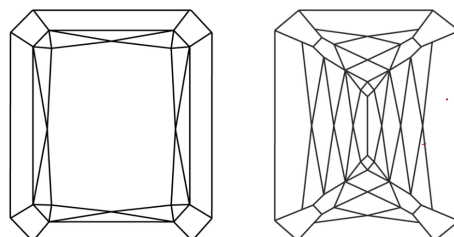
Comments: This Laboratory Grown Diamond was created by Chemical Vapor Deposition (CVD) growth process. Type IIa

**PROPORTIONS**



Sample Image Used

**CLARITY CHARACTERISTICS**



**KEY TO SYMBOLS**

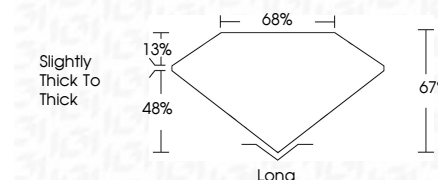
Red symbols indicate internal characteristics.  
Green symbols indicate external characteristics.

**COLOR**

D E F G H I J Faint Very Light Light

**CLARITY**

IF	VS <sup>1-2</sup>	VS <sup>1-2</sup>	SI <sup>1-2</sup>	I <sup>1-3</sup>
Internally Flawless	Very Very Slightly Included	Very Slightly Included	Slightly Included	Included



**ADDITIONAL GRADING INFORMATION**

Polish **EXCELLENT**  
Symmetry **EXCELLENT**  
Fluorescence **NONE**  
Inscription(s) **IGI LG705540340**  
Comments: This Laboratory Grown Diamond was created by Chemical Vapor Deposition (CVD) growth process. Type IIa



**IGI**



May 7, 2025  
IGI Report No LG705540340  
CUT CORNERED RECT. MIXED CUT  
2.07 CARATS  
E  
8.78 X 5.82 X 3.90 MM  
Color Grade  
Clarity Grade  
Depth  
Table  
Girdle  
Slightly Thick To Thick  
Long  
EXCELLENT  
EXCELLENT  
NONE  
IGI LG705540340  
Comments: This Laboratory Grown Diamond was created by Chemical Vapor Deposition (CVD) growth process. Type IIa