



INTERNATIONAL  
GEMOLOGICAL  
INSTITUTE

ELECTRONIC COPY

LABORATORY GROWN DIAMOND REPORT

May 12, 2025

IGI Report Number

Description

Shape and Cutting Style

Measurements

LG706577851

LABORATORY GROWN DIAMOND

ROUND BRILLIANT

9.50 - 9.53 x 5.73 mm

GRADING RESULTS

Carat Weight

Color Grade

Clarity Grade

Cut Grade

3.16 CARATS

D

VS 2

IDEAL

ADDITIONAL GRADING INFORMATION

Polish

Symmetry

Fluorescence

Inscription(s)

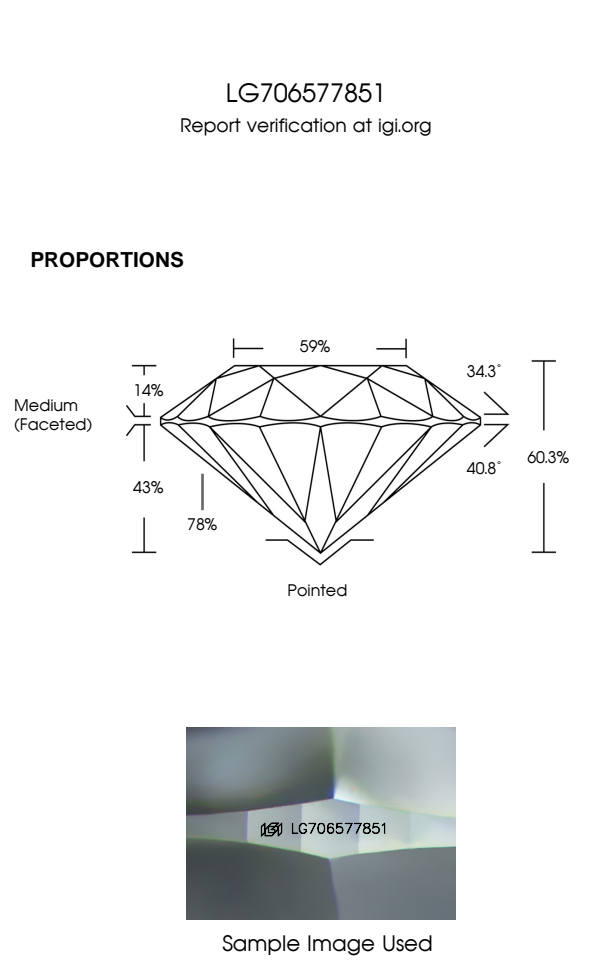
Comments: This Laboratory Grown Diamond was created by Chemical Vapor Deposition (CVD) growth process. Type IIa

EXCELLENT

EXCELLENT

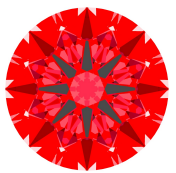
NONE

IGI LG706577851



LIGHT PERFORMANCE REPORT

Light Performance Grade: **Exceptional**



Ideal-Scope representation

Low

Moderate

High

Superior

Exceptional

Light Performance

Brightness

Fire

Contrast

COLOR

D

E

F

G

H

I

J

Faint

Very Light

Light

CLARITY

IF

VS<sup>1-2</sup>

VS<sup>1-2</sup>

SI<sup>1-2</sup>

I<sup>1-3</sup>

Internally Flawless

Very Very Slightly Included



Very Slightly Included


Slightly Included

Included

© IGI 2020, International Gemological Institute

FD - 10 20





May 12, 2025

IGI Report Number

Description

Shape and Cutting Style

Measurements

GRADING RESULTS

Carat Weight

Color Grade

Clarity Grade

Cut Grade

LG706577851

LABORATORY GROWN DIAMOND

ROUND BRILLIANT

9.50 - 9.53 X 5.73 MM

ADDITIONAL GRADING INFORMATION

Polish

Symmetry

Fluorescence

Inscription(s)

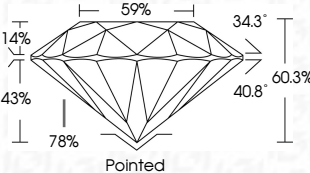
Comments: This Laboratory Grown Diamond was created by Chemical Vapor Deposition (CVD) growth process. Type IIa

EXCELLENT

EXCELLENT


NONE

IGI LG706577851



Medium (Faceted)

Pointed



IGI

May 12, 2025

IGI Report No LG706577851

ROUND BRILLIANT

9.50 - 9.53 X 5.73 MM

Carat Weight

Color Grade

Clarity Grade

Depth

Table

Grade

3.16 CARATS

D

VS 2

IDEAL

60.3%

59%

Medium (Faceted)

Culet

Polish

Symmetry

Fluorescence

Inscription(s)

Pointed

EXCELLENT

EXCELLENT

NONE

IGI LG706577851

Comments: This Laboratory Grown Diamond was created by Chemical Vapor Deposition (CVD) growth process. Type IIa