



ELECTRONIC COPY

LABORATORY GROWN DIAMOND REPORT

LG707511514
Report verification at igi.org

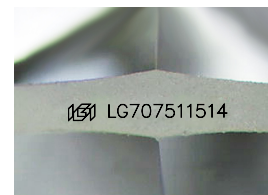
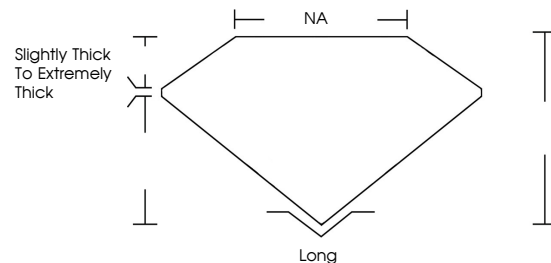
December 10, 2025	
IGI Report Number	LG707511514
Description	LABORATORY GROWN DIAMOND
Shape and Cutting Style	FREEFORM FACETED
Measurements	8.59 X 6.03 X 3.19 MM
GRADING RESULTS	
Carat Weight	1.26 CARAT
Color Grade	D
Clarity Grade	VVS 2

ADDITIONAL GRADING INFORMATION

Polish	EXCELLENT
Symmetry	EXCELLENT
Fluorescence	NONE
Inscription(s)	151 LG707511514

Comments: This Laboratory Grown Diamond was created by Chemical Vapor Deposition (CVD) growth process.
Type IIa

PROPORTIONS



Sample Image Used

COLOR

D E F G H I J Faint Very Light Light

CLARITY

FL	IF	VVS ¹⁻²	VS ¹⁻²	SI ¹⁻²	I ¹⁻³
Flawless	Internally Flawless	Very Very Slightly Included	Very Slightly Included	Slightly Included	Included

LABORATORY GROWN DIAMOND REPORT



December 10, 2025	
IGI Report Number	LG707511514
Description	LABORATORY GROWN DIAMOND
Shape and Cutting Style	FREEFORM FACETED
Measurements	8.59 X 6.03 X 3.19 MM
GRADING RESULTS	
Carat Weight	1.26 CARAT
Color Grade	D
Clarity Grade	VVS 2

ADDITIONAL GRADING INFORMATION

Polish	EXCELLENT
Symmetry	EXCELLENT
Fluorescence	NONE
Inscription(s)	 LG70751151A
<p>Comments: This Laboratory Grown Diamond was created by Chemical Vapor Deposition (CVD) growth process.</p> <p>Type IIa</p>	



IG



© IGI 2020, International Gemological Institute

FD - 10 20



THIS DOCUMENT WAS PRODUCED WITH THE FOLLOWING SECURITY MEASURES: SPECIAL DOCUMENT PAPER, INK SCREENS, WATERMARK, BACKGROUND DESIGNS, HOLOGRAM AND OTHER SECURITY FEATURES NOT LISTED AND DO EXCEED DOCUMENT SECURITY INDUSTRY GUIDELINES

www.igi.org

December 10, 2025	1.26 CARAT
GI Report No. LG70751614	VVS 2
REIFORM FACETED	0%
	NA
	Slightly Thick To
	Extremely Thick
	Long
	EXCELLENT
	EXCELLENT
	NONE
	see LG70751614

Comments:
This Laboratory Grown Diamond was created by Chemical Vapor Deposition (CVD) growth process.