



ELECTRONIC COPY

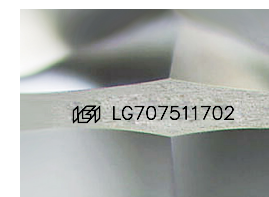
LG707511702
Report verification at igi.org



March 12, 2026
IGI Report Number **LG707511702**
Description **LABORATORY GROWN DIAMOND**
Shape and Cutting Style **FREEFORM FACETED**
Measurements **5.81 X 7.25 X 3.35 MM**

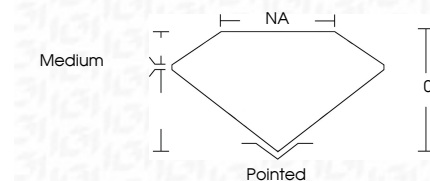
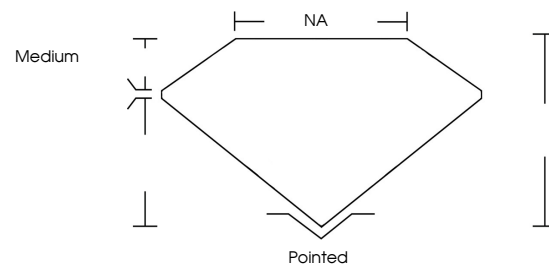
GRADING RESULTS

Carat Weight **1.01 CARAT**
Color Grade **D**
Clarity Grade **VS 1**



Sample Image Used

PROPORTIONS



March 12, 2026
IGI Report Number **LG707511702**
Description **LABORATORY GROWN DIAMOND**
Shape and Cutting Style **FREEFORM FACETED**
Measurements **5.81 X 7.25 X 3.35 MM**

GRADING RESULTS

Carat Weight **1.01 CARAT**
Color Grade **D**
Clarity Grade **VS 1**

ADDITIONAL GRADING INFORMATION

Polish **GOOD**
Symmetry **EXCELLENT**
Fluorescence **NONE**
Inscription(s) **IGI LG707511702**

Comments: This Laboratory Grown Diamond was created by Chemical Vapor Deposition (CVD) growth process.
Type IIa

COLOR

D E F G H I J Faint Very Light Light

CLARITY

FL	IF	VS ¹⁻²	VS ¹⁻²	SI ¹⁻²	I ¹⁻³
Flawless	Internally Flawless	Very Very Slightly Included	Very Slightly Included	Slightly Included	Included

ADDITIONAL GRADING INFORMATION

Polish **GOOD**
Symmetry **EXCELLENT**
Fluorescence **NONE**
Inscription(s) **IGI LG707511702**
Comments: This Laboratory Grown Diamond was created by Chemical Vapor Deposition (CVD) growth process.
Type IIa



March 12, 2026
IGI Report No. LG707511702
FREEFORM FACETED
1.01 CARAT
D
5.81 X 7.25 X 3.35 MM
Color Grade
D
Clarity Grade
VS 1
Table
0%
Girdle
NA
Medium
Culet
Pointed
Polish
GOOD
Symmetry
EXCELLENT
Fluorescence
NONE
Inscription(s)
IGI LG707511702
Comments: This Laboratory Grown Diamond was created by Chemical Vapor Deposition (CVD) growth process.
Type IIa