

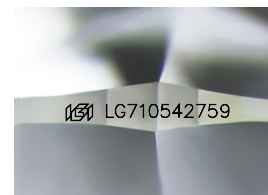
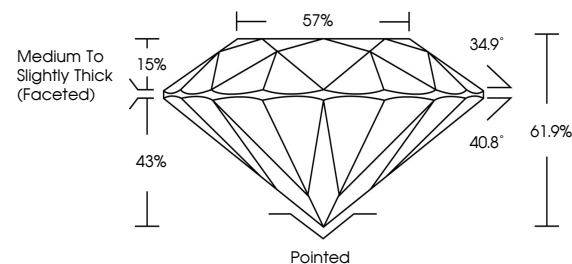


ELECTRONIC COPY

LABORATORY GROWN DIAMOND REPORT

LG710542759
Report verification at igi.org

PROPORTIONS



Sample Image Used

COLOR

D E F G H I J Faint Very Light Light

CLARITY

IF	VVS ¹⁻²	VS ¹⁻²	SI ¹⁻²	I ¹⁻³
Internally Flawless	Very Very Slightly Included	Very Slightly Included	Slightly Included	Included



© IGI 2020, International Gemological Institute

FD - 10 20

www.igi.org

LABORATORY GROWN DIAMOND REPORT



May 22, 2025

IGI Report Number **LG710542759**Description **LABORATORY GROWN DIAMOND**Shape and Cutting Style **ROUND BRILLIANT**

Measurements 6.82 - 6.85 X 4.23 MM

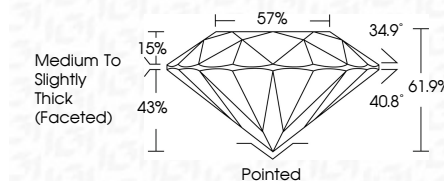
GRADING RESULTS

Carat Weight 1.22 CARAT

Color Grade

Clarity Grade VS 1

Cut Grade **IDEAL**



ADDITIONAL GRADING INFORMATION

Polish **EXCELLENT**Symmetry **EXCELLENT**Fluorescence **NONE**Inscription(s) LG710542759

Comments: As Grown - No indication of post-growth treatment.

This Laboratory Grown Diamond was created by High Pressure High Temperature (HPHT) growth process.

Type II



May 22, 2025	Carat Weight	1.22 CARAT
GI Report No. 1671064759	Color Grade	D
ROUND BRILLIANT	Clarity Grade	VS 1
	Depth	IDEAL
	Table	61.5%
	Girdle	57%
	Medium To Slightly Thick (face)ed	
	Culet	Pointed
	Polish	EXCELLENT
	Symmetry	EXCELLENT
	Fluorescence	NONE
	Inscriptions(s)	1671064759

Comments:

No Growth: No indication of post-growth in this Laboratory Grown Diamond was created by High Pressure High Temperature (HPHT) growth process. Type I