



**ELECTRONIC COPY**

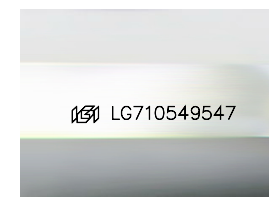
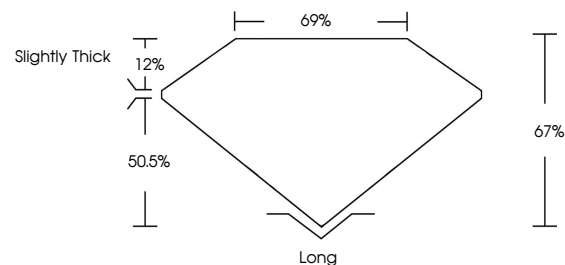
LG710549547  
Report verification at igi.org



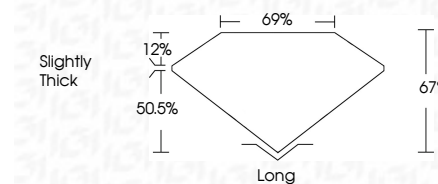
May 22, 2025  
IGI Report Number **LG710549547**  
Description **LABORATORY GROWN DIAMOND**  
Shape and Cutting Style **EMERALD CUT**  
Measurements **11.19 X 7.48 X 5.01 MM**  
**GRADING RESULTS**  
Carat Weight **4.31 CARATS**  
Color Grade **E**  
Clarity Grade **VS 1**

May 22, 2025  
IGI Report Number **LG710549547**  
Description **LABORATORY GROWN DIAMOND**  
Shape and Cutting Style **EMERALD CUT**  
Measurements **11.19 X 7.48 X 5.01 MM**  
**GRADING RESULTS**  
Carat Weight **4.31 CARATS**  
Color Grade **E**  
Clarity Grade **VS 1**

**PROPORTIONS**



Sample Image Used



**ADDITIONAL GRADING INFORMATION**

Polish **EXCELLENT**  
Symmetry **EXCELLENT**  
Fluorescence **NONE**  
Inscription(s) **IGI LG710549547**

Comments: This Laboratory Grown Diamond was created by Chemical Vapor Deposition (CVD) growth process.  
Type IIa

**ADDITIONAL GRADING INFORMATION**

Polish **EXCELLENT**  
Symmetry **EXCELLENT**  
Fluorescence **NONE**  
Inscription(s) **IGI LG710549547**  
Comments: This Laboratory Grown Diamond was created by Chemical Vapor Deposition (CVD) growth process.  
Type IIa

**COLOR**

D E F G H I J Faint Very Light Light

**CLARITY**

IF	WS <sup>1-2</sup>	VS <sup>1-2</sup>	SI <sup>1-2</sup>	I <sup>1-3</sup>
Internally Flawless	Very Very Slightly Included	Very Slightly Included	Slightly Included	Included



**IGI**



May 22, 2025  
IGI Report No LG710549547  
**EMERALD CUT**  
11.19 X 7.48 X 5.01 MM  
4.31 CARATS  
E  
VS 1  
67%  
69%  
Slightly Thick  
Long  
EXCELLENT  
EXCELLENT  
NONE  
IGI LG710549547  
Comments: This Laboratory Grown Diamond was created by Chemical Vapor Deposition (CVD) growth process.  
Type IIa