



ELECTRONIC COPY

LG710549552
Report verification at igi.org



May 23, 2025

IGI Report Number **LG710549552**

Description **LABORATORY GROWN DIAMOND**

Shape and Cutting Style **EMERALD CUT**

Measurements **11.34 X 7.49 X 4.87 MM**

GRADING RESULTS

Carat Weight **4.31 CARATS**

Color Grade **E**

Clarity Grade **VS 1**

May 23, 2025

IGI Report Number **LG710549552**

Description **LABORATORY GROWN DIAMOND**

Shape and Cutting Style **EMERALD CUT**

Measurements **11.34 X 7.49 X 4.87 MM**

GRADING RESULTS

Carat Weight **4.31 CARATS**

Color Grade **E**

Clarity Grade **VS 1**

ADDITIONAL GRADING INFORMATION

Polish **EXCELLENT**

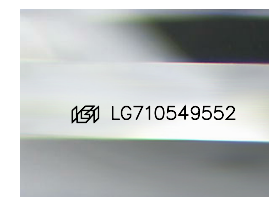
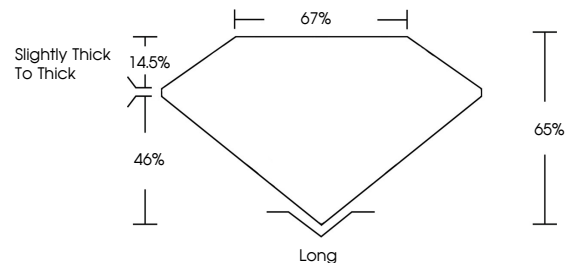
Symmetry **EXCELLENT**

Fluorescence **NONE**

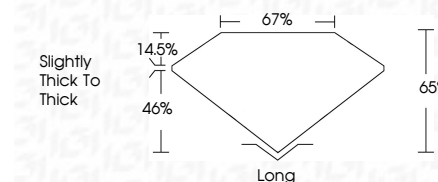
Inscription(s) **IGI LG710549552**

Comments: This Laboratory Grown Diamond was created by Chemical Vapor Deposition (CVD) growth process.
Type IIa

PROPORTIONS



Sample Image Used



COLOR

D E F G H I J Faint Very Light Light

CLARITY

IF	VS ¹⁻²	VS ¹⁻²	SI ¹⁻²	I ¹⁻³
Internally Flawless	Very Very Slightly Included	Very Slightly Included	Slightly Included	Included

ADDITIONAL GRADING INFORMATION

Polish **EXCELLENT**

Symmetry **EXCELLENT**

Fluorescence **NONE**

Inscription(s) **IGI LG710549552**

Comments: This Laboratory Grown Diamond was created by Chemical Vapor Deposition (CVD) growth process.
Type IIa



IGI



May 23, 2025
IGI Report No LG710549552
EMERALD CUT

11.34 X 7.49 X 4.87 MM

4.31 CARATS
E

Color Grade
VS 1

Depth 65%
Table 67%
Girdle Slightly Thick To Thick

Culet Long
Polish EXCELLENT
Symmetry EXCELLENT
Fluorescence NONE
Inscription(s) IGI LG710549552

Comments: This Laboratory Grown Diamond was created by Chemical Vapor Deposition (CVD) growth process.
Type IIa