



**ELECTRONIC COPY**

LG710553297  
Report verification at igi.org



June 10, 2025  
IGI Report Number **LG710553297**  
Description **LABORATORY GROWN DIAMOND**  
Shape and Cutting Style **BAGUETTE**  
Measurements **9.47 X 4.73 X 3.05 MM**  
**GRADING RESULTS**  
Carat Weight **1.54 CARAT**  
Color Grade **F**  
Clarity Grade **VVS 2**

June 10, 2025  
IGI Report Number **LG710553297**  
Description **LABORATORY GROWN DIAMOND**  
Shape and Cutting Style **BAGUETTE**  
Measurements **9.47 X 4.73 X 3.05 MM**

**GRADING RESULTS**

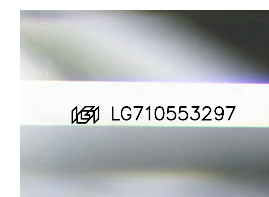
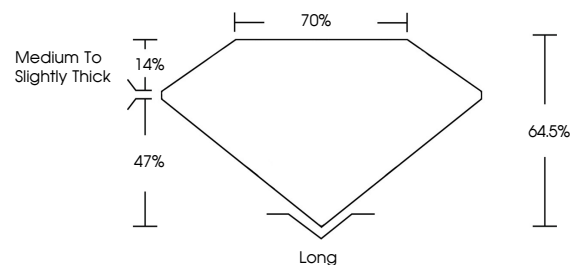
Carat Weight **1.54 CARAT**  
Color Grade **F**  
Clarity Grade **VVS 2**

**ADDITIONAL GRADING INFORMATION**

Polish **EXCELLENT**  
Symmetry **EXCELLENT**  
Fluorescence **NONE**  
Inscription(s) **IGI LG710553297**

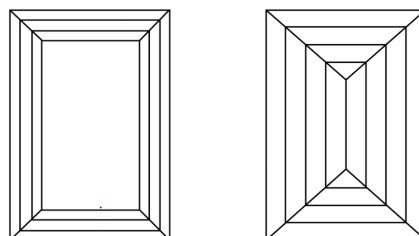
Comments: This Laboratory Grown Diamond was created by Chemical Vapor Deposition (CVD) growth process. Type IIa

**PROPORTIONS**



Sample Image Used

**CLARITY CHARACTERISTICS**



**KEY TO SYMBOLS**

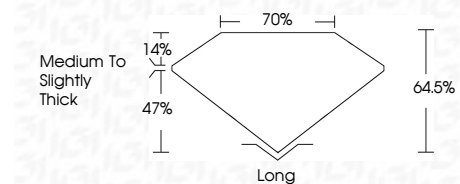
Red symbols indicate internal characteristics.  
Green symbols indicate external characteristics.

**COLOR**

D E F G H I J Faint Very Light Light

**CLARITY**

IF	VS <sup>1-2</sup>	VS <sup>1-2</sup>	SI <sup>1-2</sup>	I <sup>1-3</sup>
Internally Flawless	Very Very Slightly Included	Very Slightly Included	Slightly Included	Included



**ADDITIONAL GRADING INFORMATION**

Polish **EXCELLENT**  
Symmetry **EXCELLENT**  
Fluorescence **NONE**  
Inscription(s) **IGI LG710553297**  
Comments: This Laboratory Grown Diamond was created by Chemical Vapor Deposition (CVD) growth process. Type IIa



June 10, 2025  
IGI Report No LG710553297  
**BAGUETTE**  
9.47 X 4.73 X 3.05 MM  
1.54 CARAT  
F  
VVS 2  
64.5%  
70%  
Medium to Slightly Thick  
Long  
EXCELLENT  
EXCELLENT  
NONE  
IGI LG710553297  
Comments: This Laboratory Grown Diamond was created by Chemical Vapor Deposition (CVD) growth process. Type IIa