



ELECTRONIC COPY

LG710554574
Report verification at igi.org



May 28, 2025
IGI Report Number **LG710554574**
Description **LABORATORY GROWN DIAMOND**
Shape and Cutting Style **ROUND BRILLIANT**
Measurements **6.40 - 6.45 X 4.01 MM**
GRADING RESULTS
Carat Weight **1.02 CARAT**
Color Grade **D**
Clarity Grade **INTERNALLY FLAWLESS**
Cut Grade **IDEAL**

May 28, 2025
IGI Report Number **LG710554574**
Description **LABORATORY GROWN DIAMOND**
Shape and Cutting Style **ROUND BRILLIANT**
Measurements **6.40 - 6.45 X 4.01 MM**

GRADING RESULTS

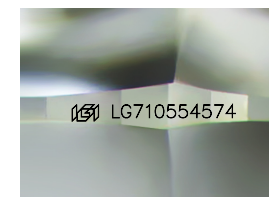
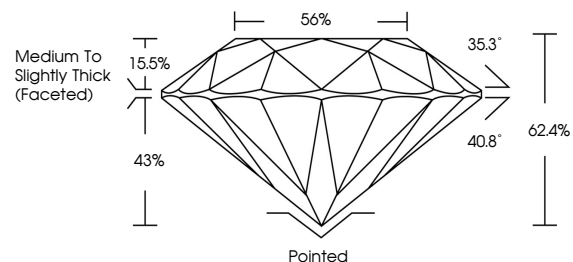
Carat Weight **1.02 CARAT**
Color Grade **D**
Clarity Grade **INTERNALLY FLAWLESS**
Cut Grade **IDEAL**

ADDITIONAL GRADING INFORMATION

Polish **EXCELLENT**
Symmetry **EXCELLENT**
Fluorescence **NONE**
Inscription(s) **IGI LG710554574**

Comments: As Grown - No indication of post-growth treatment.
This Laboratory Grown Diamond was created by High Pressure High Temperature (HPHT) growth process.
Type II

PROPORTIONS



Sample Image Used

CLARITY CHARACTERISTICS



KEY TO SYMBOLS

Red symbols indicate internal characteristics.
Green symbols indicate external characteristics.

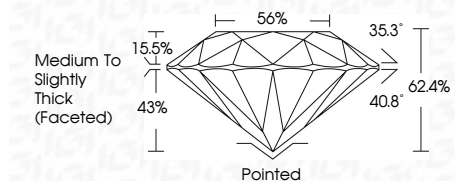
COLOR

D E F G H I J Faint Very Light Light

CLARITY

IF VS¹⁻² VS¹⁻² SI¹⁻² I¹⁻³

Internally Flawless Very Very Slightly Included Very Slightly Included Slightly Included Included



ADDITIONAL GRADING INFORMATION

Polish **EXCELLENT**
Symmetry **EXCELLENT**
Fluorescence **NONE**
Inscription(s) **IGI LG710554574**
Comments: As Grown - No indication of post-growth treatment.
This Laboratory Grown Diamond was created by High Pressure High Temperature (HPHT) growth process.
Type II



IGI



May 28, 2025	1.02 CARAT	D	IF	IDEAL	62.4%	56%	Medium To Slightly Thick (Faceted)	Pointed	EXCELLENT	EXCELLENT	NONE	IGI LG710554574
IGI Report No LG710554574	6.40 - 6.45 X 4.01 MM	LABORATORY GROWN DIAMOND	CLARITY	CUT	DEPTH	TABLE	GIRDLE	SHAPE AND CUTTING STYLE	POLISH	SYMMETRY	FLUORESCENCE	INSCRIPTION(S)
ROUND BRILLIANT			INTERNALLY FLAWLESS	IDEAL	62.4%	56%	Medium To Slightly Thick (Faceted)	ROUND BRILLIANT	EXCELLENT	EXCELLENT	NONE	IGI LG710554574
Carat Weight	1.02 CARAT											
Color Grade	D											
Clarity Grade	INTERNALLY FLAWLESS											
Depth	62.4%											
Table	56%											
Girdle	Medium To Slightly Thick (Faceted)											
Culet	Pointed											
Polish	EXCELLENT											
Symmetry	EXCELLENT											
Fluorescence	NONE											
Inscription(s)	IGI LG710554574											
Comments:	As Grown - No indication of post-growth treatment. This Laboratory Grown Diamond was created by High Pressure High Temperature (HPHT) growth process. Type II											