

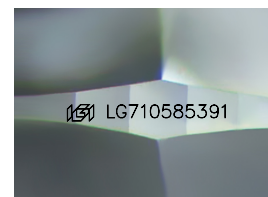
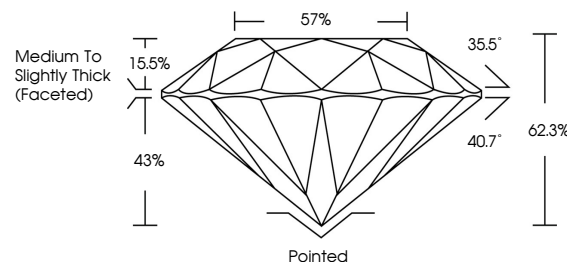


ELECTRONIC COPY

LABORATORY GROWN DIAMOND REPORT

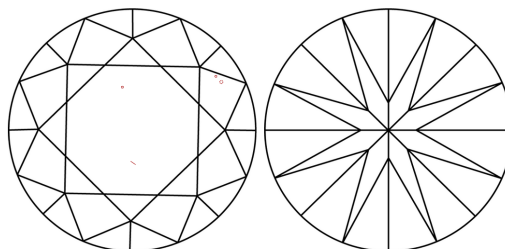
LG710585391
Report verification at [igi.org](https://www.igi.org)

PROPORTIONS



Sample Image Used

CLARITY CHARACTERISTICS



KEY TO SYMBOLS

Red symbols indicate internal characteristics.
Green symbols indicate external characteristics.

COLOR

D E F G H I J Faint Very Light Light

CLARITY

IF WS¹⁻² VS¹⁻² SI¹⁻² |¹⁻³

Internally Flawless	Very Very Slightly Included	Very Slightly Included	Slightly Included	Included
------------------------	--------------------------------	---------------------------	----------------------	----------



June 11, 2025

IGI Report Number **LG710585391**Description **LABORATORY GROWN DIAMOND**Shape and Cutting Style **ROUND BRILLIANT**

Measurements	8.68 - 8.71 X 5.42 MM
--------------	-----------------------

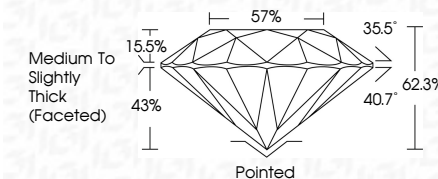
GRADING RESULTS

Carat Weight **2.55 CARATS**

Color Grade **E**

Clarity Grade VS 2

Cut Grade **IDEAL**



ADDITIONAL GRADING INFORMATION

Polish **EXCELLENT**Symmetry **EXCELLENT**Fluorescence **NONE**Inscription(s) LG710585391

Comments: This Laboratory Grown Diamond was created by Chemical Vapor Deposition (CVD) growth process.
Type IIa



© IGI 2020, International Gemological Institute

FD - 10 20

www.igi.org

THIS DOCUMENT WAS PRODUCED WITH THE FOLLOWING SECURITY MEASURES: SPECIAL DOCUMENT PAPER, INK SCREENS, WATERMARK BACKGROUND DESIGNS, HOLOGRAM AND OTHER SECURITY FEATURES NOT LISTED AND DO EXCEED DOCUMENT SECURITY INDUSTRY GUIDELINES

June 11, 2025
GI Report No LG710585391
ROUND BRILLIANT

ROUND BRILLIANT	3.68 - 8.71 X 5.42 MM		Carat Weight	2.55 CARATS
	Color Grade		E	
	Clarity Grade		VS 2	
	Cut Grade		IDEAL	
	Depth		62.9%	
	Table		57%	
	Girdle		Medium To Slightly Thick (Faceted)	
	Culet		Pointed	
	Polish		EXCELLENT	
	Symmetry		EXCELLENT	
Fluorescence		NONE		

Comments:
This Laboratory Grown Diamond was
created by Chemical Vapor Deposition
(CVD) growth process.