



ELECTRONIC COPY

LABORATORY GROWN DIAMOND REPORT

June 19, 2025	
IGI Report Number	LG712510789
Description	LABORATORY GROWN DIAMOND
Shape and Cutting Style	ROUND BRILLIANT
Measurements	6.60 - 6.62 X 4.02 MM

GRADING RESULTS

Carat Weight	1.07 CARAT
Color Grade	D
Clarity Grade	VS 2
Cut Grade	IDEAL

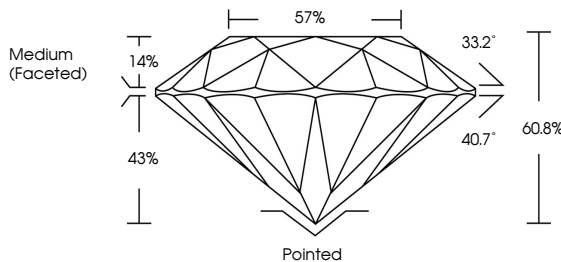
ADDITIONAL GRADING INFORMATION

Polish	EXCELLENT
Symmetry	EXCELLENT
Fluorescence	NONE
Inscription(s)	 LG712510789

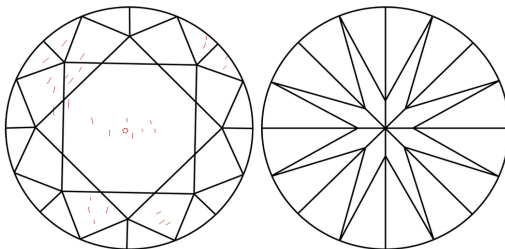
Comments: As Grown - No indication of post-growth treatment.
This Laboratory Grown Diamond was created by High Pressure High Temperature (HPHT) growth process.
Type II

LG712510789
Report verification at igi.org

PROPORTIONS

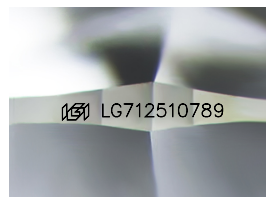


CLARITY CHARACTERISTICS



KEY TO SYMBOLS

Red symbols indicate internal characteristics.
Green symbols indicate external characteristics.



Sample Image Used

COLOR

D E F G H I J Faint Very Light Light

CLARITY

IF WS¹⁻² VS¹⁻² SI¹⁻² |¹⁻³

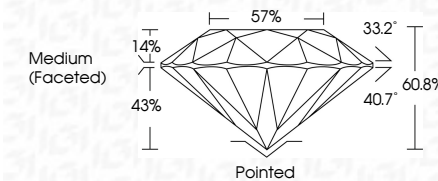
Internally Flawless	Very Very Slightly Included	Very Slightly Included	Slightly Included	Included
---------------------	-----------------------------	------------------------	-------------------	----------



June 19, 2025	
IGI Report Number	LG712510789
Description	LABORATORY GROWN DIAMOND
Shape and Cutting Style	ROUND BRILLIANT
Measurements	6.60 - 6.62 X 4.02 MM

GRADING RESULTS

Carat Weight	1.07 CARAT
Color Grade	D
Clarity Grade	VS 2
Cut Grade	IDEAL



ADDITIONAL GRADING INFORMATION

Polish	EXCELLENT
Symmetry	EXCELLENT
Fluorescence	NONE
Inscription(s)	(G) LG712510789
Comments: As Grown - No indication of post-growth treatment.	
This Laboratory Grown Diamond was created by High Pressure High Temperature (HPHT) growth process.	
Type II	



© IGI 2020, International Gemological Institute

FD - 10 20

www.igi.org



June 19, 2025
IGI Report No LG712510789
ROUND BRILLIANT

6.60 - 6.62 X 4.02 MM	1.07 CARAT	D	VS 2	Pointed
Carat Weight			IDEAL	EXCELLENT
Color Grade			60.0%	NONE
Clarity Grade			57%	4411 15712105000
Cut Grade			Medium (faceted)	
Depth				
Table				
Girdle				
Culet				
Polish				
Symmetry				
Fluorescence				

Comments:
As Grown - No indication of post-growth treatment.
This Laboratory Grown Diamond was created by High Pressure High Temperature (HPHT) growth process.