

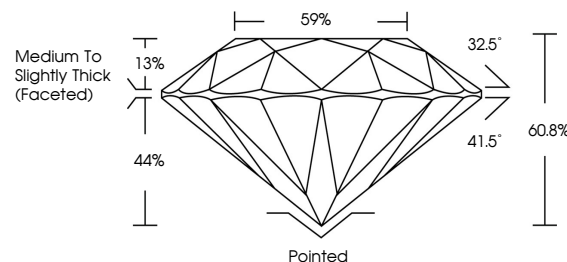


ELECTRONIC COPY

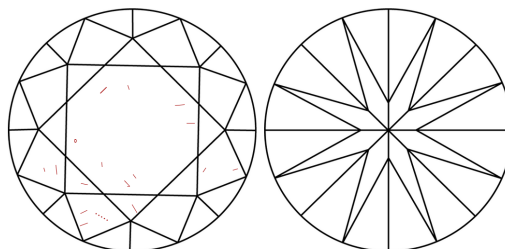
LABORATORY GROWN DIAMOND REPORT

LG712574250
Report verification at lgi.org

PROPORTIONS



CLARITY CHARACTERISTICS



KEY TO SYMBOLS

Red symbols indicate internal characteristics.
Green symbols indicate external characteristics.

COLOR

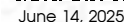
D E F G H I J Faint Very Light Light

CLARITY

IF WS¹⁻² VS¹⁻² SI¹⁻² |¹⁻³

Internally Flawless	Very Very Slightly Included	Very Slightly Included	Slightly Included	Included
------------------------	--------------------------------	---------------------------	----------------------	----------

LABORATORY GROWN DIAMOND REPORT

IGI Report Number **LG712574250**Description **LABORATORY GROWN DIAMOND**Shape and Cutting Style **ROUND BRILLIANT**

Measurements 7.36 - 7.42 X 4.50 MM

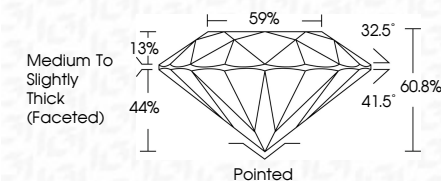
GRADING RESULTS

Carat Weight **1.50 CARAT**

Color Grade F

Clarity Grade VS 1

Cut Grade **EXCELLENT**



ADDITIONAL GRADING INFORMATION

Polish **EXCELLENT**Symmetry **EXCELLENT**Fluorescence **NONE**Inscription(s) LG712574250

Comments: As Grown - No indication of post-growth treatment.

This Laboratory Grown Diamond was created by High Pressure High Temperature (HPHT) growth process.
Type II



© IGI 2020, International Gemological Institute

FD - 10 20

www.igi.org



June 14, 2025
GI Report No LG712574250
ROUND BRILLIANT

7.36 - 7.42 X 4.50 MM	1.50 CARAT	VS 1	EXCELLENT	59%	Medium to Slightly Thick (faceted)	Pointed	EXCELLENT	NONE	4mm (27.197.1259)
Carat Weight									
Color Grade									
Clarity Grade									
Cut Grade									
Depth									
Table									
Girdle									
Culet									
Polish									
Symmetry									
Fluorescence									
Comments									

Comments:
As Grown - No indication of post-growth treatment.