



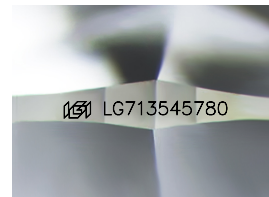
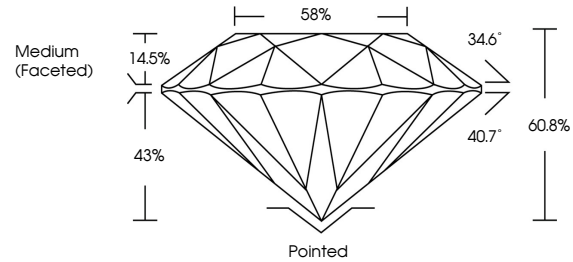
**INTERNATIONAL
GEMOLOGICAL
INSTITUTE**

ELECTRONIC COPY

LABORATORY GROWN DIAMOND REPORT

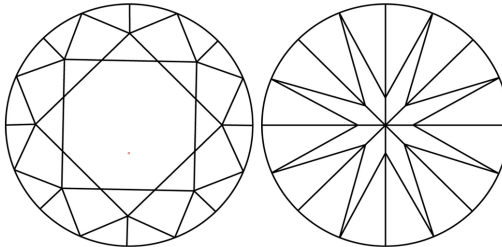
LG713545780
Report verification at igi.org

PROPORTIONS



Sample Image Used

CLARITY CHARACTERISTICS



KEY TO SYMBOLS

Red symbols indicate internal characteristics.
Green symbols indicate external characteristics.

COLOR

D E F G H I J Faint Very Light Light

CLARITY

IF WS¹⁻² VS¹⁻² SI¹⁻² I¹⁻³

Internally Flawless	Very Very Slightly Included	Very Slightly Included	Slightly Included	Included
------------------------	--------------------------------	---------------------------	----------------------	----------



© IGI 2020, International Gemological Institute

FD - 10 20

LABORATORY GROWN DIAMOND REPORT



June 18, 2025

IGI Report Number **LG713545780**

Description	LABORATORY GROWN DIAMOND
-------------	--------------------------

Shape and Cutting Style **ROUND BRILLIANT**

Measurements 8.14 - 8.15 X 4.95 MM

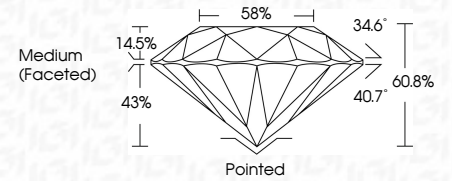
GRADING RESULTS

Carat Weight **2.03 CARATS**

Color Grade	F
-------------	---

Clarity Grade VS 1

Cut Grade **IDEAL**



ADDITIONAL GRADING INFORMATION

Polish **EXCELLENT**

Symmetry **EXCELLENT**

Fluorescence **NONE**Inscription(s) **151** LG713545780

Comments: This Laboratory Grown Diamond was created by Chemical Vapor Deposition (CVD) growth process.
Type IIa



IGI

June 18, 2025	2.03 CARATS	VS 1	Pointed
IGI Report No. I9713545780		IDEAL	EXCELLENT
ROUND BRILLIANT		60.8%	EXCELLENT
		56%	NONE
		Medium (Faceted)	#61697 19545780
18.14 - 8.15 X 4.95 MM			
Carat Weight	Color Grade	Clarity Grade	Culet
		Out Grade	Polish
		Depth	Symmetry
		Table	Fluorescence
		Grade	(incriptions)
			Comments:
			This Laboratory Grown Diamond was
			created by Chemical Vapor Deposition
			(CVD) growth process.
			Type IId