



ELECTRONIC COPY

LABORATORY GROWN DIAMOND REPORT

August 29, 2025	
IGI Report Number	LG713561027
Description	LABORATORY GROWN DIAMOND
Shape and Cutting Style	ROUND BRILLIANT
Measurements	6.91 - 6.97 X 4.28 MM

GRADING RESULTS

Carat Weight	1.26 CARAT
Color Grade	D
Clarity Grade	VS 2
Cut Grade	IDEAL

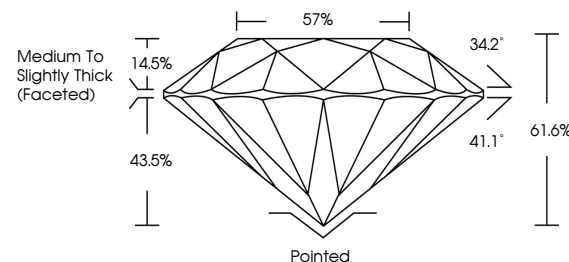
ADDITIONAL GRADING INFORMATION

Polish	EXCELLENT
Symmetry	EXCELLENT
Fluorescence	NONE
Inscription(s)	151 LG713561027

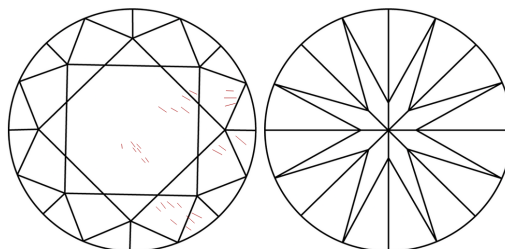
Comments: As Grown - No indication of post-growth treatment.
This Laboratory Grown Diamond was created by High Pressure High Temperature (HPHT) growth process.
Type II

LG713561027
Report verification at lgi.org

PROPORTIONS

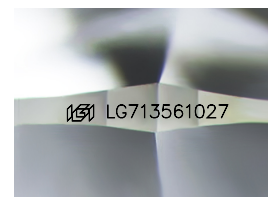


CLARITY CHARACTERISTICS



KEY TO SYMBOLS

Red symbols indicate internal characteristics.
Green symbols indicate external characteristics.



Sample Image Used

COLOR

D E F G H I J Faint Very Light Light

CLARITY

IF WS¹⁻² VS¹⁻² SI¹⁻² |¹⁻³

Internally Flawless	Very Very Slightly Included	Very Slightly Included	Slightly Included	Included
------------------------	--------------------------------	---------------------------	----------------------	----------



© IGI 2020, International Gemological Institute

FD - 10 20

www.igi.org

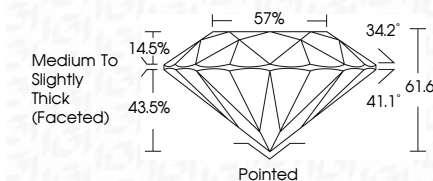
LABORATORY GROWN DIAMOND REPORT



August 29, 2025	
IGI Report Number	LG713561027Z
Description	LABORATORY GROWN DIAMOND
Shape and Cutting Style	ROUND BRILLIANT
Measurements	6.91 - 6.97 X 4.28 MM

GRADING RESULTS

Carat Weight	1.26 CARAT
Color Grade	D
Clarity Grade	VS 2
Cut Grade	IDEAL



ADDITIONAL GRADING INFORMATION

Polish	EXCELLENT
Symmetry	EXCELLENT
Fluorescence	NONE
Inscription(s)	IGI LG713561027
Comments: As Grown - No indication of post-growth treatment.	
This Laboratory Grown Diamond was created by High Pressure High Temperature (HPHT) growth process.	
Type II	



IG

	D	1.26 CARAT VS-2 IDEAL 61.6% 57%
	Culet	Pointed EXCELLENT EXCELLENT NONE #GJ195610ZT
	Polish	
	Symmetry	
	Fluorescence	
	Inscriptions(s)	
<hr/>		
Comments:		
No Growth - No indication of post-growth treatment.		
This Laboratory Grown Diamond was created by High Pressure High temperature (HPHT) growth process.		
Type II		