



ELECTRONIC COPY

LG713569548
Report verification at igi.org



June 16, 2025
IGI Report Number **LG713569548**
Description **LABORATORY GROWN DIAMOND**
Shape and Cutting Style **OCTAGONAL MODIFIED BRILLIANT**
Measurements **6.79 X 6.77 X 4.20 MM**
GRADING RESULTS
Carat Weight **1.17 CARAT**
Color Grade **F**
Clarity Grade **VS 1**

June 16, 2025
IGI Report Number **LG713569548**
Description **LABORATORY GROWN DIAMOND**
Shape and Cutting Style **OCTAGONAL MODIFIED BRILLIANT**
Measurements **6.79 X 6.77 X 4.20 MM**

GRADING RESULTS

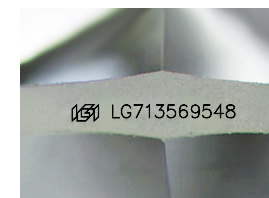
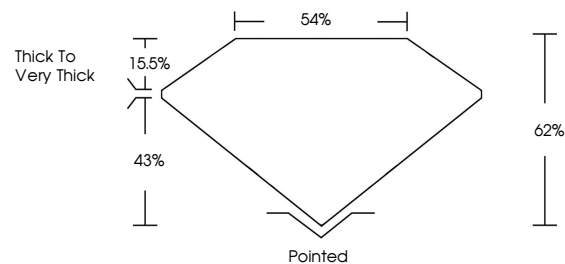
Carat Weight **1.17 CARAT**
Color Grade **F**
Clarity Grade **VS 1**

ADDITIONAL GRADING INFORMATION

Polish **EXCELLENT**
Symmetry **EXCELLENT**
Fluorescence **NONE**
Inscription(s) **IGI LG713569548**

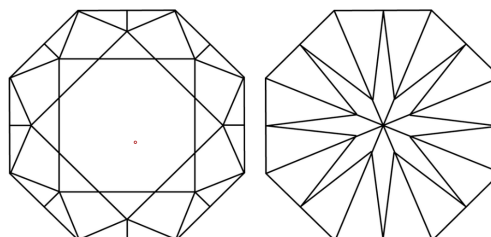
Comments: This Laboratory Grown Diamond was created by Chemical Vapor Deposition (CVD) growth process. Type IIa

PROPORTIONS



Sample Image Used

CLARITY CHARACTERISTICS



KEY TO SYMBOLS

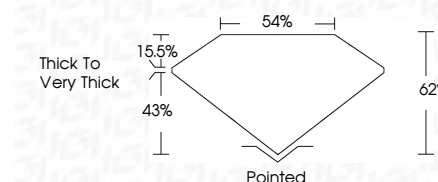
Red symbols indicate internal characteristics.
Green symbols indicate external characteristics.

COLOR

D E F G H I J Faint Very Light Light

CLARITY

IF	VS ¹⁻²	VS ¹⁻²	SI ¹⁻²	I ¹⁻³
Internally Flawless	Very Very Slightly Included	Very Slightly Included	Slightly Included	Included



ADDITIONAL GRADING INFORMATION

Polish **EXCELLENT**
Symmetry **EXCELLENT**
Fluorescence **NONE**
Inscription(s) **IGI LG713569548**
Comments: This Laboratory Grown Diamond was created by Chemical Vapor Deposition (CVD) growth process. Type IIa



June 16, 2025
IGI Report No LG713569548
OCTAGONAL MODIFIED BRILLIANT
6.79 X 6.77 X 4.20 MM
1.17 CARAT
F
VS 1
62%
54%
Thick to Very Thick
Pointed
EXCELLENT
EXCELLENT
NONE
IGI LG713569548
Comments: This Laboratory Grown Diamond was created by Chemical Vapor Deposition (CVD) growth process. Type IIa