

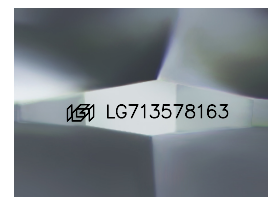
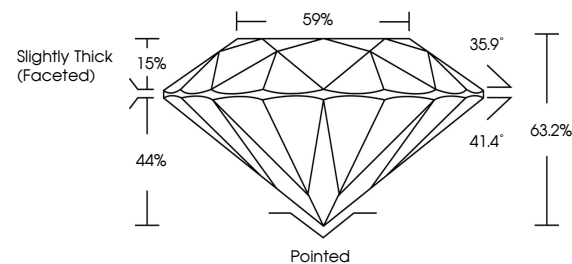


**ELECTRONIC COPY**

## LABORATORY GROWN DIAMOND REPORT

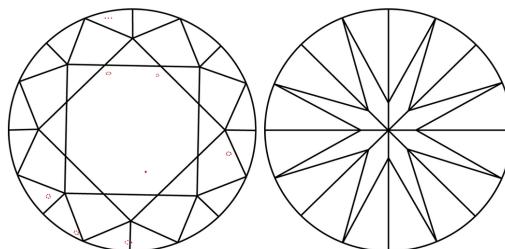
LG713578163  
Report verification at [igi.org](https://igi.org)

## PROPORTIONS



Sample Image Used

## CLARITY CHARACTERISTICS



### KEY TO SYMBOLS

Red symbols indicate internal characteristics.  
Green symbols indicate external characteristics.

## COLOR

D E F G H I J Faint Very Light Light

## CLARITY

IF WS<sup>1-2</sup> VS<sup>1-2</sup> SI<sup>1-2</sup> |<sup>1-3</sup>

Internally Flawless	Very Very Slightly Included	Very Slightly Included	Slightly Included	Included
------------------------	--------------------------------	---------------------------	----------------------	----------

## LABORATORY GROWN DIAMOND REPORT



June 10, 2025

IGI Report Number **LG713578163**Description **LABORATORY GROWN DIAMOND**Shape and Cutting Style **ROUND BRILLIANT**

Measurements 7.25 - 7.28 X 4.59 MM

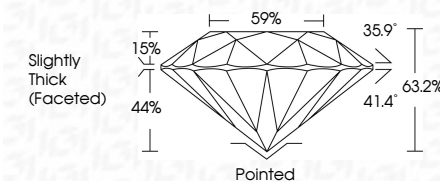
## GRADING RESULTS

Carat Weight **1.52 CARAT**

Color Grade E

Clarity Grade VS 1

Cut Grade **EXCELLENT**



### ADDITIONAL GRADING INFORMATION

Polish **EXCELLENT**Symmetry **EXCELLENT**Fluorescence **NONE**Inscription(s)  LG713578163

Comments: This Laboratory Grown Diamond was created by Chemical Vapor Deposition (CVD) growth process.  
Type IIa



© IGI 2020, International Gemological Institute

FD - 10 20



THIS DOCUMENT WAS PRODUCED WITH THE FOLLOWING SECURITY MEASURES: SPECIAL DOCUMENT PAPER, INK SCREENS, WATERMARK, BACKGROUND DESIGNS, HOLOGRAM, AND OTHER SECURITY FEATURES NOT LISTED AND DO EXCEED DOCUMENT SECURITY INDUSTRY GUIDELINES.

**www.igi.org**

June 10, 2025	Carat Weight	1.52 CARAT
GI Report No. L6713578163	Color Grade	E
ROUND BRILLIANT	Clarity Grade	VS 1
25.25 - 12.26 X 4.65 MM	Cut Grade	EXCELLENT
	Depth	63.2%
	Table	59%
	Grain	Slightly Thick (finished)
	Culet	Pointed
	Polish	EXCELLENT
	Symmetry	EXCELLENT
	Fluorescence	NONE
	Inscriptions (if any)	6891 L6713578163
	Comments:	This Laboratory Grown Diamond was created by Chemical Vapor Deposition (CVD) growth process.
	Type IIA	