

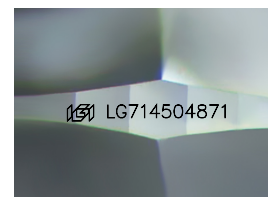
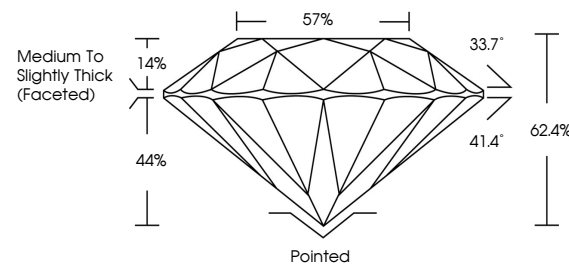


ELECTRONIC COPY

LABORATORY GROWN DIAMOND REPORT

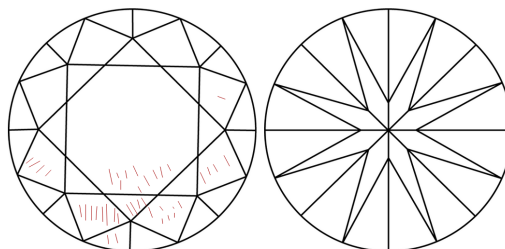
LG714504871
Report verification at igi.org

PROPORTIONS



Sample Image Used

CLARITY CHARACTERISTICS



KEY TO SYMBOLS

Red symbols indicate internal characteristics.
Green symbols indicate external characteristics.

COLOR

D E F G H I J Faint Very Light Light

CLARITY

IF WS¹⁻² VS¹⁻² SI¹⁻² |¹⁻³

Internally Flawless	Very Very Slightly Included	Very Slightly Included	Slightly Included	Included
------------------------	--------------------------------	---------------------------	----------------------	----------

LABORATORY GROWN DIAMOND REPORT



June 11, 2025

IGI Report Number **LG714504871**

Description	LABORATORY GROWN DIAMOND
-------------	--------------------------

Shape and Cutting Style **ROUND BRILLIANT**

Measurements 6.60 - 6.61 X 4.12 MM

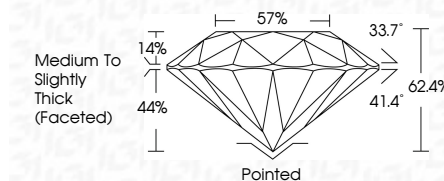
GRADING RESULTS

Carat Weight 1.10 CARAT

Color Grade D

Clarity Grade SI 1

Cut Grade **IDEAL**



ADDITIONAL GRADING INFORMATION

Polish EXCELLENT

Symmetry **EXCELLENT**Fluorescence **NONE**Inscription(s) LG714504871

Comments: As Grown - No indication of post-growth treatment.

This Laboratory Grown Diamond was created by High Pressure High Temperature (HPHT) growth process.

Type II



www.igi.org

© IGI 2020, International Gemological Institute

FD - 10 20



THIS DOCUMENT WAS PRODUCED WITH THE FOLLOWING SECURITY MEASURES: SPECIAL DOCUMENT PAPER, INK SCREENS, WATERMARK, BACKGROUND DESIGNS, HOLOGRAM AND OTHER SECURITY FEATURES NOT LISTED AND DO EXCEED DOCUMENT SECURITY INDUSTRY GUIDELINES

June 11, 2025	IGI Report No. LG74604871	1.10 CARAT	D	S I	IDEAL	62.4%	57%	Medium to Slightly Thick (Faceted)	Pointed	EXCELLENT	EXCELLENT	NONE	lgsl LG74604871	As Grown - No indication of post-growth treatment.
	ROUND-BRILLIANT	ROUND - 6.61 X 4.12 MM	Color Grade	Clarity Grade	Cut Grade	Depth	Table			Symmetry	Fluorescence	Inscriptions(s)		The Laboratory Growth Diamond was created by High Pressure High Temperature (HPHT) growth process.
		Carat Weight					Circle		Culet					Type II