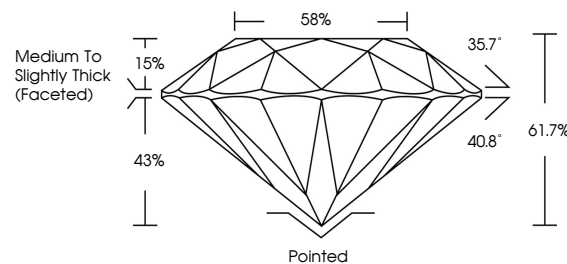


**ELECTRONIC COPY**

## LABORATORY GROWN DIAMOND REPORT

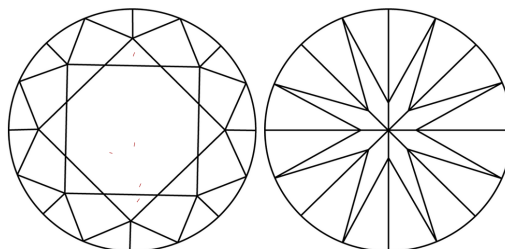
LG715501525  
Report verification at [igi.org](https://igi.org)

## PROPORTIONS



Sample Image Used

## CLARITY CHARACTERISTICS



### KEY TO SYMBOLS

Red symbols indicate internal characteristics.  
Green symbols indicate external characteristics.

## COLOR

D E F G H I J Faint Very Light Light

## CLARITY

IF WS<sup>1-2</sup> VS<sup>1-2</sup> SI<sup>1-2</sup> |<sup>1-3</sup>

Internally Flawless	Very Very Slightly Included	Very Slightly Included	Slightly Included	Included
------------------------	--------------------------------	---------------------------	----------------------	----------



© IGI 2020, International Gemological Institute

FD - 10 20

**www.igi.org**

## LABORATORY GROWN DIAMOND REPORT



June 20, 2025

IGI Report Number **LG715501525**Description **LABORATORY GROWN DIAMOND**Shape and Cutting Style **ROUND BRILLIANT**

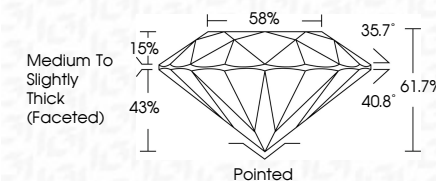
Measurements 6.54 - 6.58 X 4.05 MM

## GRADING RESULTS

Carat Weight 1.08 CARAT

Color Grade **E**Clarity Grade WS 2

Cut Grade **IDEAL**



### ADDITIONAL GRADING INFORMATION

Polish EXCELLENT

Symmetry **EXCELLENT**Fluorescence NONInscription(s)  LG715501525

Comments: As Grown - No indication of post-growth treatment.

This Laboratory Grown Diamond was created by High Pressure High Temperature (HPHT) growth process.

Type II



June 20, 2026	1.08 CARAT
GJ Report No. GJ715501825	VVS 2
ROUND BRILLIANT	IDEAL
	61.7%
	89%
	Medium to Slightly Tink (Faceted)
1.54 - 4.68 X 4.05 MM	Polished
Color Grade	EXCELLENT
Clarity Grade	EXCELLENT
Cut Grade	NONE
Depth	489 (G2715501825
Table	
Girdle	
Culet	
Polish	
Symmetry	
Fluorescence	
Comments:	
No. 69 - No Indication of post-growth	
As Grown -	
This Laboratory Grown Diamond was	
created by High Pressure High	
Temperature (HPHT) growth process.	
Type 1a	