



ELECTRONIC COPY

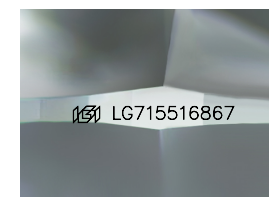
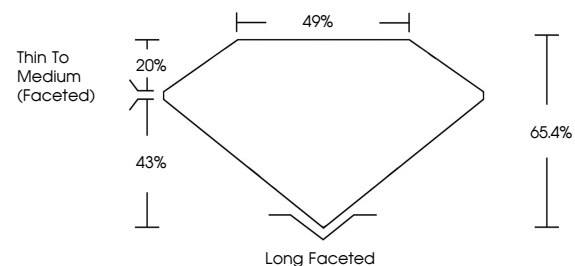
LG715516867
Report verification at igi.org



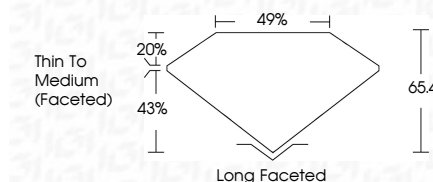
June 11, 2025
IGI Report Number **LG715516867**
Description **LABORATORY GROWN DIAMOND**
Shape and Cutting Style **CUSHION BRILLIANT**
Measurements **8.74 X 6.16 X 4.03 MM**
GRADING RESULTS
Carat Weight **1.66 CARAT**
Color Grade **E**
Clarity Grade **VS 1**

June 11, 2025
IGI Report Number **LG715516867**
Description **LABORATORY GROWN DIAMOND**
Shape and Cutting Style **CUSHION BRILLIANT**
Measurements **8.74 X 6.16 X 4.03 MM**
GRADING RESULTS
Carat Weight **1.66 CARAT**
Color Grade **E**
Clarity Grade **VS 1**

PROPORTIONS



Sample Image Used



ADDITIONAL GRADING INFORMATION

Polish **EXCELLENT**
Symmetry **EXCELLENT**
Fluorescence **NONE**
Inscription(s) **IGI LG715516867**

Comments: This Laboratory Grown Diamond was created by Chemical Vapor Deposition (CVD) growth process.
Type IIa

ADDITIONAL GRADING INFORMATION

Polish **EXCELLENT**
Symmetry **EXCELLENT**
Fluorescence **NONE**
Inscription(s) **IGI LG715516867**
Comments: This Laboratory Grown Diamond was created by Chemical Vapor Deposition (CVD) growth process.
Type IIa

COLOR

D E F G H I J Faint Very Light Light

CLARITY

IF	WS ¹⁻²	VS ¹⁻²	SI ¹⁻²	I ¹⁻³
Internally Flawless	Very Very Slightly Included	Very Slightly Included	Slightly Included	Included



IGI



June 11, 2025
IGI Report No LG715516867
CUSHION BRILLIANT
8.74 X 6.16 X 4.03 MM
1.66 CARAT
E
VS 1
65.4%
49%
Thin To Medium (Faceted)
Long Faceted
EXCELLENT
EXCELLENT
NONE
IGI LG715516867
Comments: This Laboratory Grown Diamond was created by Chemical Vapor Deposition (CVD) growth process.
Type IIa