

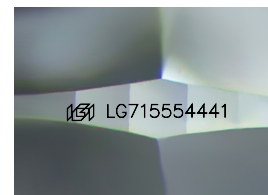
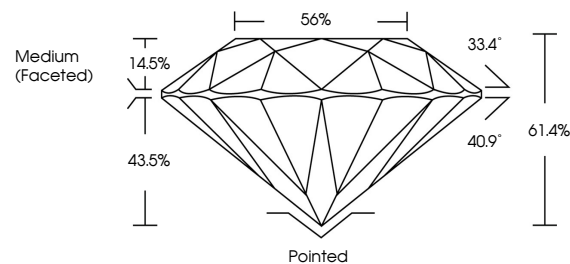


ELECTRONIC COPY

LABORATORY GROWN DIAMOND REPORT

LG715554441
Report verification at igi.org

PROPORTIONS



Sample Image Used

COLOR

D E F G H I J Faint Very Light Light

CLARITY

IF	VVS ¹⁻²	VS ¹⁻²	SI ¹⁻²	I ¹⁻³
Internally Flawless	Very Very Slightly Included	Very Slightly Included	Slightly Included	Included



© IGI 2020, International Gemological Institute

FD - 10 20

www.igi.org

LABORATORY GROWN DIAMOND REPORT



June 16, 2025

IGI Report Number **LG715554441**Description **LABORATORY GROWN DIAMOND**Shape and Cutting Style **ROUND BRILLIANT**

Measurements 6.43 - 6.51 X 3.97 MM

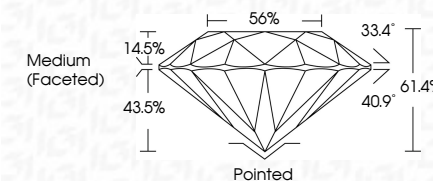
GRADING RESULTS

Carat Weight 1.01 CARAT

Color Grade D

Clarity Grade WS 2

Cut Grade **IDEAL**



ADDITIONAL GRADING INFORMATION

Polish **EXCELLENT**Symmetry **EXCELLENT**Fluorescence **NONE**Inscription(s)  LG715554441

Comments: As Grown - No indication of post-growth treatment.

This Laboratory Grown Diamond was created by High Pressure High Temperature (HPHT) growth process.

Type II



	Color Weight	1.01 CARAT
	Color Grade	D
	Clarity Grade	VVS 2
	Cut Grade	IDEAL
	Depth	61.4%
	Table	56%
	Girdle	Medium (Faceted)
	Culet	Painted
	Polish	EXCELLENT
	Symmetry	EXCELLENT
	Fluorescence Descriptions(s)	NONE
		(#9) LG718544A1

Comments:

As Grown - No Indication of post-growth treatment.
 The Laboratory Crown Diamond was grown by the High Pressure High Temperature (HPHT) growth process.
 Type II