



**ELECTRONIC COPY**

715558200  
Report verification at [igi.org](http://igi.org)

**DIAMOND REPORT**

July 11, 2025  
IGI Report Number **715558200**  
Description **NATURAL DIAMOND**  
Shape and Cutting Style **SQUARE CUSHION MODIFIED BRILLIANT**  
Measurements **5.81 X 5.53 X 3.69 MM**

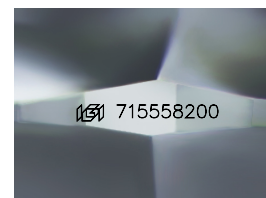
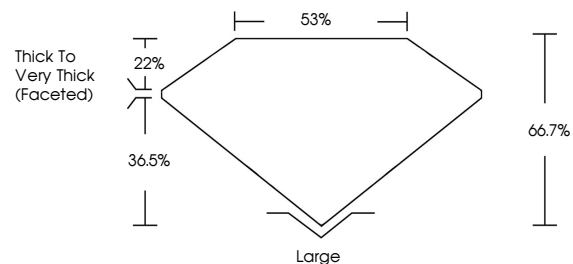
**GRADING RESULTS**

Carat Weight **1.00 CARAT**  
Color Grade **NATURAL FANCY BROWN**  
Clarity Grade **VS 1**  
Cut Grade **GOOD**

**ADDITIONAL GRADING INFORMATION**

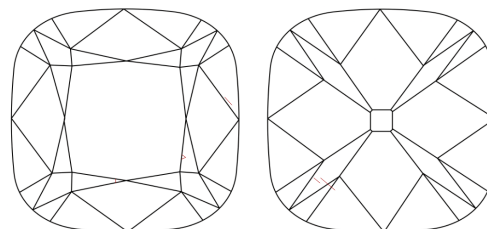
Polish **VERY GOOD**  
Symmetry **VERY GOOD**  
Fluorescence **NONE**  
Inscription(s) **715558200**

**PROPORTIONS**



Sample Image Used

**CLARITY CHARACTERISTICS**



**KEY TO SYMBOLS**

Red symbols indicate internal characteristics.  
Green symbols indicate external characteristics.

**COLOR**

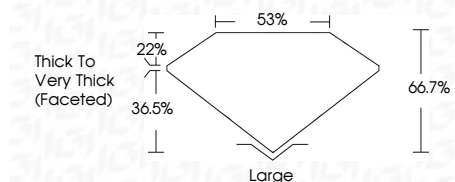
D - F	G - J	K - M	N - R	S - Z	FANCY
Colorless	Near Colorless	Slightly Tinted	Very Light Color	Light Color	

**CLARITY**

IF	VVS <sup>1-2</sup>	VS <sup>1-2</sup>	SI <sup>1-2</sup>	I <sup>1-3</sup>
Internally Flawless	Very Very Slightly Included	Very Slightly Included	Slightly Included	Included



July 11, 2025  
IGI Report Number **715558200**  
Description **NATURAL DIAMOND**  
Shape and Cutting Style **SQUARE CUSHION MODIFIED BRILLIANT**  
Measurements **5.81 X 5.53 X 3.69 MM**  
**GRADING RESULTS**  
Carat Weight **1.00 CARAT**  
Color Grade **NATURAL FANCY BROWN**  
Clarity Grade **VS 1**  
Cut Grade **GOOD**



**ADDITIONAL GRADING INFORMATION**

Polish **VERY GOOD**  
Symmetry **VERY GOOD**  
Fluorescence **NONE**  
Inscription(s) **715558200**



**IGI**



July 11, 2025  
IGI Report No 715558200  
**SQUARE CUSHION MODIFIED BRILLIANT**  
1.00 CARAT  
Carat Weight  
Color Grade **NATURAL FANCY BROWN**  
Clarity Grade **VS 1**  
Cut Grade **GOOD**  
Depth 66.7%  
Table 88%  
Girdle **Thick to Very Thick (Faceted)**  
Culet **Large**  
Polish **VERY GOOD**  
Symmetry **VERY GOOD**  
Fluorescence **NONE**  
Inscription(s) **715558200**