



ELECTRONIC COPY

LABORATORY GROWN DIAMOND REPORT

| | |
|-------------------------|--------------------------|
| July 4, 2025 | |
| IGI Report Number | LG717599887 |
| Description | LABORATORY GROWN DIAMOND |
| Shape and Cutting Style | ROUND BRILLIANT |
| Measurements | 6.45 - 6.48 X 4.03 MM |

GRADING RESULTS

| | |
|---------------|------------|
| Carat Weight | 1.04 CARAT |
| Color Grade | E |
| Clarity Grade | VVS 1 |
| Cut Grade | IDEAL |

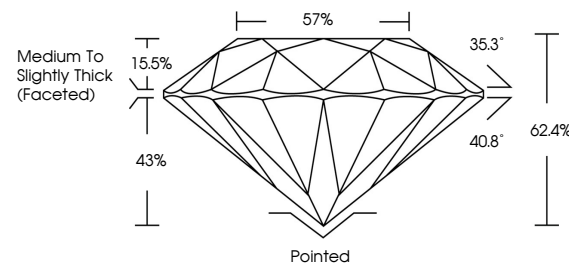
ADDITIONAL GRADING INFORMATION

| | |
|----------------|----------------|
| Polish | EXCELLENT |
| Symmetry | EXCELLENT |
| Fluorescence | NONE |
| Inscription(s) | 15 LG717599887 |

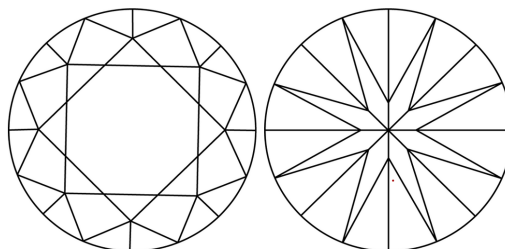
Comments: As Grown - No indication of post-growth treatment.
This Laboratory Grown Diamond was created by High Pressure High Temperature (HPHT) growth process.
Type II

LG717599887
Report verification at igi.org

PROPORTIONS

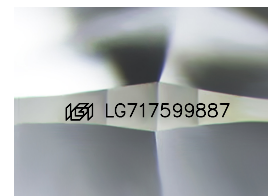


CLARITY CHARACTERISTICS



KEY TO SYMBOLS

Red symbols indicate internal characteristics.
Green symbols indicate external characteristics.



Sample Image Used

COLOR

D E F G H I J Faint Very Light Light

CLARITY

IF WS¹⁻² VS¹⁻² SI¹⁻² I¹⁻³

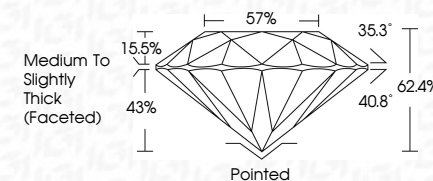
| Internally Flawless | Very Very Slightly Included | Very Slightly Included | Slightly Included | Included |
|------------------------|--------------------------------|---------------------------|----------------------|----------|
|------------------------|--------------------------------|---------------------------|----------------------|----------|



| | |
|-------------------------|--------------------------|
| July 4, 2025 | |
| IGI Report Number | LG717599887 |
| Description | LABORATORY GROWN DIAMOND |
| Shape and Cutting Style | ROUND BRILLIANT |
| Measurements | 6.45 - 6.48 X 4.03 MM |

GRADING RESULTS

| | |
|---------------|------------|
| Carat Weight | 1.04 CARAT |
| Color Grade | E |
| Clarity Grade | VVS 1 |
| Cut Grade | IDEAL |



ADDITIONAL GRADING INFORMATION

| | |
|--|---------------------------|
| Polish | EXCELLENT |
| Symmetry | EXCELLENT |
| Fluorescence | NONE |
| Inscription(s) | LG LG717599887 |
| <p>Comments: As Grown - No indication of post-growth treatment.</p> <p>This Laboratory Grown Diamond was created by High Pressure High Temperature (HPHT) growth process.</p> <p>Type II</p> | |



© IGI 2020, International Gemological Institute

FD - 10 20



THIS DOCUMENT WAS PRODUCED WITH THE FOLLOWING SECURITY MEASURES: SPECIAL DOCUMENT PAPER, INK SCREENS, WATERMARK, BACKGROUND DESIGNS, HOLOGRAM AND OTHER SECURITY FEATURES NOT LISTED AND DO EXCEED DOCUMENT SECURITY INDUSTRY GUIDELINES

www.igi.org

July 4, 2025
GJ Report No | G717599887

| | |
|---|---|
| <p> IGI Report No.IG17759087 TOPAZ ROUND BRILLANT 4.65 - 4.48 X 4.03 MM Color Weight Color Grade Clarity Grade Cut Grade Depth Table Girdle </p> | <p> 1.04 CARAT E VVS 1 IDEAL 62.4% 57% Medium to Slightly Thick (Faceted) Polished EXCELLENT EXCELLENT NONE VERY SLIGHT </p> |
|---|---|

Comments:
As Grown - No indication of post-growth treatment.