

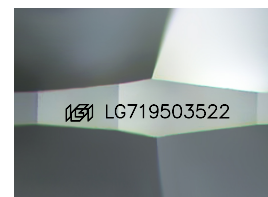
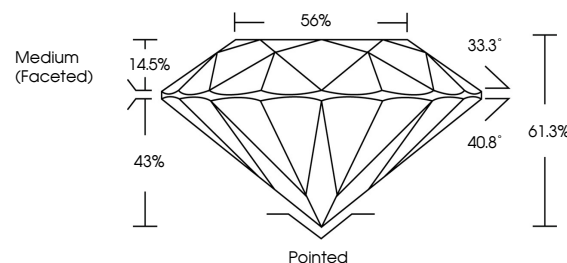


ELECTRONIC COPY

LABORATORY GROWN DIAMOND REPORT

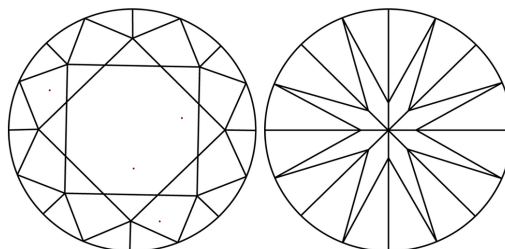
LG719503522
Report verification at igi.org

PROPORTIONS



Sample Image Used

CLARITY CHARACTERISTICS



KEY TO SYMBOLS

Red symbols indicate internal characteristics.
Green symbols indicate external characteristics.

COLOR

D E F G H I J Faint Very Light Light

CLARITY

IF WS¹⁻² VS¹⁻² SI¹⁻² |¹⁻³

Internally Flawless	Very Very Slightly Included	Very Slightly Included	Slightly Included	Included
------------------------	--------------------------------	---------------------------	----------------------	----------

LABORATORY GROWN DIAMOND REPORT



June 30, 2025

IGI Report Number **LG719503522**Description **LABORATORY GROWN DIAMOND**Shape and Cutting Style **ROUND BRILLIANT**

Measurements 11.94 - 12.00 X 7.33 MM

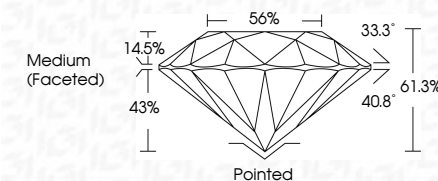
GRADING RESULTS

Carat Weight **6.38 CARATS**

Color Grade

Clarity Grade WS 2

Cut Grade **IDEAL**



ADDITIONAL GRADING INFORMATION

Polish **EXCELLENT**Symmetry **EXCELLENT**Fluorescence **NONE**Inscription(s) LG719503522

Comments: This Laboratory Grown Diamond was created by Chemical Vapor Deposition (CVD) growth process.
Type IIa



www.igi.org

© IGI 2020, International Gemological Institute

FD - 10 20



THIS DOCUMENT WAS PRODUCED WITH THE FOLLOWING SECURITY MEASURES: SPECIAL DOCUMENT PAPER, INK SCREENS, WATERMARK, BACKGROUND DESIGNS, HOLOGRAM AND OTHER SECURITY FEATURES NOT LISTED AND DO EXCEED DOCUMENT SECURITY INDUSTRY GUIDELINE

June 30, 2025	G Report No. G71903922	
ROUND BRILLIANT		
	11.94 - 12.00 X 7.33 MM	6.38 CARATS
Color Grade	Clarity Grade	E
Color Grade	Clarity Grade	VVS 2
Depth	Table	IDEAL
Table	Grade	61.3%
Grade		56%
		Medium (Faceted)
Culet	Polish	Pointed
Symmetry	Fluorescence	EXCELLENT
Inscriptions(s)		EXCELLENT
		NONE
		691 LG71903922
Comments:		
The Laboratory Grown Diamond was created by Chemical Vapor Deposition (CVD) growth process.		
Type IIA		