



ELECTRONIC COPY

LABORATORY GROWN DIAMOND REPORT

July 9, 2025	
IGI Report Number	LG719537216
Description	LABORATORY GROWN DIAMOND
Shape and Cutting Style	ROUND BRILLIANT
Measurements	6.54 - 6.57 X 3.96 MM

GRADING RESULTS

Carat Weight	1.04 CARAT
Color Grade	FANCY PINK
Clarity Grade	VVS 2
Cut Grade	IDEAL

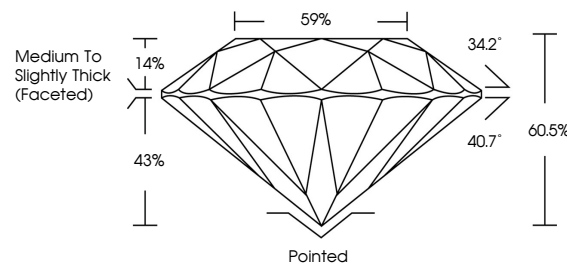
ADDITIONAL GRADING INFORMATION

Polish	VERY GOOD
Symmetry	EXCELLENT
Fluorescence	SLIGHT
Inscription(s)	 LG719537216

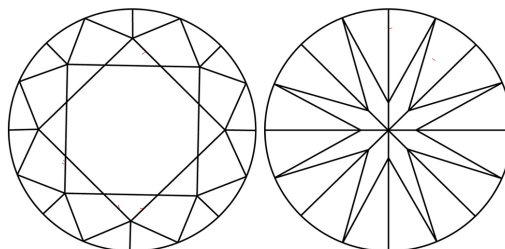
Comments: This Laboratory Grown Diamond was created by Chemical Vapor Deposition (CVD) growth process.
Indications of post-growth treatment.

LG719537216
Report verification at igi.org

PROPORTIONS

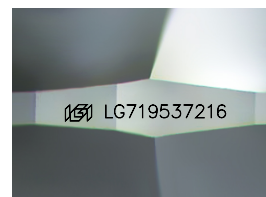


CLARITY CHARACTERISTICS



KEY TO SYMBOLS

Red symbols indicate internal characteristics.
Green symbols indicate external characteristics.



Sample Image Used

COLOR

D E F G H I J Faint Very Light Light

CLARITY

IF WS¹⁻² VS¹⁻² SI¹⁻² |¹⁻³

Internally Flawless	Very Very Slightly Included	Very Slightly Included	Slightly Included	Included
------------------------	--------------------------------	---------------------------	----------------------	----------

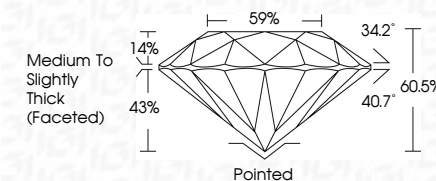
LABORATORY GROWN DIAMOND REPORT



July 9, 2025	
IGI Report Number	LG719537216
Description	LABORATORY GROWN DIAMOND
Shape and Cutting Style	ROUND BRILLIANT
Measurements	6.54 - 6.57 X 3.96 MM

GRADING RESULTS

Carat Weight	1.04 CARAT
Color Grade	FANCY PINK
Clarity Grade	VVS 2
Cut Grade	IDEAL



ADDITIONAL GRADING INFORMATION

Polish	VERY GOOD
Symmetry	EXCELLENT
Fluorescence	SLIGHT
Inscription(s)	LG LG719537216
<p>Comments: This Laboratory Grown Diamond was created by Chemical Vapor Deposition (CVD) growth process.</p> <p>Indications of post-growth treatment.</p>	



© IGI 2020, International Gemological Institute

FD - 10 20

www.igi.org

THIS DOCUMENT WAS PRODUCED WITH THE FOLLOWING SECURITY MEASURES: SPECIAL DOCUMENT PAPER, INK SCREENS, WATERMARK BACKGROUND DESIGNS, HOLOGRAM AND OTHER SECURITY FEATURES NOT LISTED AND DO EXCEED DOCUMENT SECURITY INDUSTRY GUIDELINES

July 9, 2025	GI Report No. LG71953216	ROUND BRILLANT	1.04 CARAT	FANCY PINK	VVS 2	IDEAL	60.5%	89%	Medium to Slightly Thick (Faceted)	Pointed	VERY GOOD	EXCELLENT	SIGHT	1691 LG71953216	Comments: This Fancy Green Diamond was treated by Chemical Vapor Deposition (CVD) growth process. Indications of post-growth treatment.
		6.54 - 6.57 X 3.96 MM	Carat Weight	Color Grade	Clarity Grade	Cut Grade	Table	Girdle		Culet	Symmetry	Fluorescence	Inscriptions(s)		