



**ELECTRONIC COPY**

LG719544286  
Report verification at igi.org



July 8, 2025

IGI Report Number **LG719544286**

Description **LABORATORY GROWN DIAMOND**

Shape and Cutting Style **OLD EUROPEAN CUT**

Measurements **7.29 - 7.35 X 4.72 MM**

**GRADING RESULTS**

Carat Weight **1.63 CARAT**

Color Grade **FANCY VIVID GREEN**

Clarity Grade **VS 2**

July 8, 2025

IGI Report Number **LG719544286**

Description **LABORATORY GROWN DIAMOND**

Shape and Cutting Style **OLD EUROPEAN CUT**

Measurements **7.29 - 7.35 X 4.72 MM**

**GRADING RESULTS**

Carat Weight **1.63 CARAT**

Color Grade **FANCY VIVID GREEN**

Clarity Grade **VS 2**

**ADDITIONAL GRADING INFORMATION**

Polish **EXCELLENT**

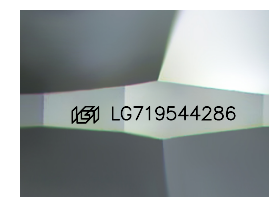
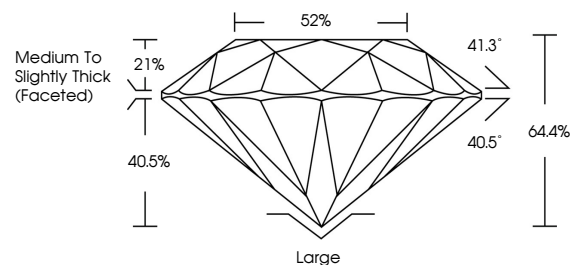
Symmetry **EXCELLENT**

Fluorescence **NONE**

Inscription(s) **IGI LG719544286**

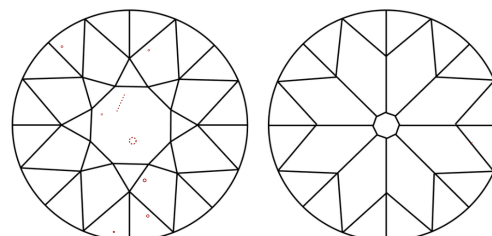
Comments: This Laboratory Grown Diamond was created by Chemical Vapor Deposition (CVD) growth process. Indications of post-growth treatment.

**PROPORTIONS**



Sample Image Used

**CLARITY CHARACTERISTICS**



**KEY TO SYMBOLS**

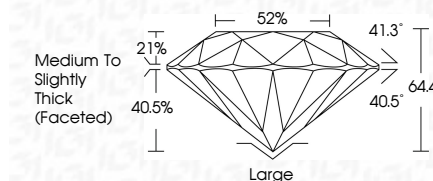
Red symbols indicate internal characteristics.  
Green symbols indicate external characteristics.

**COLOR**

D E F G H I J Faint Very Light Light

**CLARITY**

IF	VS <sup>1-2</sup>	VS <sup>1-2</sup>	SI <sup>1-2</sup>	I <sup>1-3</sup>
Internally Flawless	Very Very Slightly Included	Very Slightly Included	Slightly Included	Included



**ADDITIONAL GRADING INFORMATION**

Polish **EXCELLENT**

Symmetry **EXCELLENT**

Fluorescence **NONE**

Inscription(s) **IGI LG719544286**

Comments: This Laboratory Grown Diamond was created by Chemical Vapor Deposition (CVD) growth process. Indications of post-growth treatment.



July 8, 2025  
IGI Report No LG719544286  
OLD EUROPEAN CUT

1.63 CARAT  
Carat Weight  
FANCY VIVID GREEN  
Color Grade

VS 2  
Clarity Grade

7.29 - 7.35 X 4.72 MM  
Depth  
Table  
Girdle

Medium to Slightly Thick (Faceted)

Large  
Culet  
Polish  
Symmetry  
Fluorescence  
Inscription(s)

EXCELLENT  
EXCELLENT  
NONE  
IGI LG719544286

Comments: This Laboratory Grown Diamond was created by Chemical Vapor Deposition (CVD) growth process. Indications of post-growth treatment.