



ELECTRONIC COPY

LG719553435
Report verification at igi.org



July 4, 2025
IGI Report Number **LG719553435**
Description **LABORATORY GROWN DIAMOND**
Shape and Cutting Style **CUSHION BRILLIANT**
Measurements **7.89 X 6.68 X 4.58 MM**
GRADING RESULTS
Carat Weight **2.00 CARATS**
Color Grade **FANCY VIVID PINK**
Clarity Grade **VS 2**

July 4, 2025
IGI Report Number **LG719553435**
Description **LABORATORY GROWN DIAMOND**
Shape and Cutting Style **CUSHION BRILLIANT**
Measurements **7.89 X 6.68 X 4.58 MM**

GRADING RESULTS

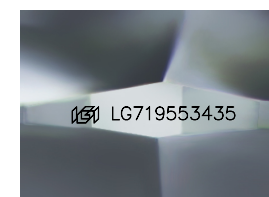
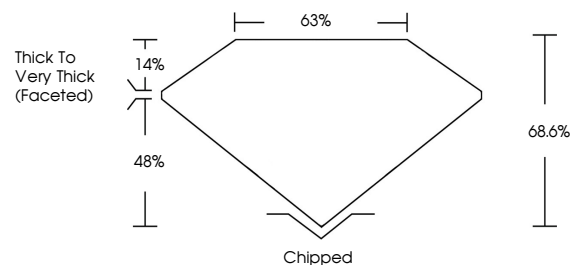
Carat Weight **2.00 CARATS**
Color Grade **FANCY VIVID PINK**
Clarity Grade **VS 2**

ADDITIONAL GRADING INFORMATION

Polish **GOOD**
Symmetry **EXCELLENT**
Fluorescence **STRONG**
Inscription(s) **LG719553435**

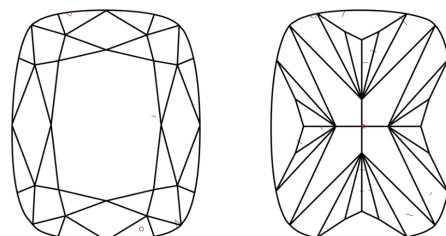
Comments: This Laboratory Grown Diamond was created by Chemical Vapor Deposition (CVD) growth process. Indications of post-growth treatment.

PROPORTIONS



Sample Image Used

CLARITY CHARACTERISTICS



KEY TO SYMBOLS

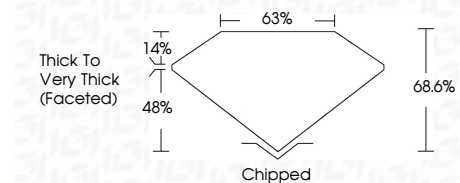
Red symbols indicate internal characteristics.
Green symbols indicate external characteristics.

COLOR

D E F G H I J Faint Very Light Light

CLARITY

IF	VS ¹⁻²	VS ¹⁻²	SI ¹⁻²	I ¹⁻³
Internally Flawless	Very Very Slightly Included	Very Slightly Included	Slightly Included	Included



ADDITIONAL GRADING INFORMATION

Polish **GOOD**
Symmetry **EXCELLENT**
Fluorescence **STRONG**
Inscription(s) **LG719553435**
Comments: This Laboratory Grown Diamond was created by Chemical Vapor Deposition (CVD) growth process. Indications of post-growth treatment.



IGI



July 4, 2025
IGI Report No LG719553435
CUSHION BRILLIANT
2.00 CARATS
Carat Weight
Color Grade **FANCY VIVID PINK**
Clarity Grade **VS 2**
Depth **68.6%**
Table **63%**
Girdle **Thick to Very Thick (Faceted)**
Culet **Chipped**
Polish **GOOD**
Symmetry **EXCELLENT**
Fluorescence **STRONG**
Inscription(s) **LG719553435**

Comments: This Laboratory Grown Diamond was created by Chemical Vapor Deposition (CVD) growth process. Indications of post-growth treatment.