



**ELECTRONIC COPY**

## LABORATORY GROWN DIAMOND REPORT

LG719558035  
Report verification at [igi.org](https://igi.org)

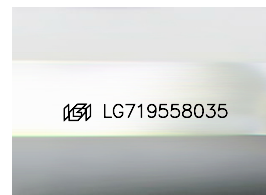
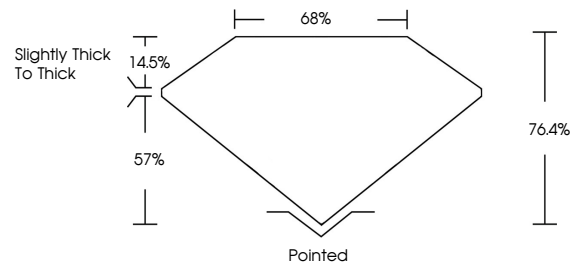
June 26, 2025	
IGI Report Number	LG719558035
Description	LABORATORY GROWN DIAMOND
Shape and Cutting Style	PRINCESS CUT
Measurements	5.45 X 5.25 X 4.01 MM
GRADING RESULTS	
Carat Weight	1.00 CARAT
Color Grade	D
Clarity Grade	VS 1

### ADDITIONAL GRADING INFORMATION

Polish	EXCELLENT
Symmetry	VERY GOOD
Fluorescence	NONE
Inscription(s)	151 LG719558035

Comments: This Laboratory Grown Diamond was created by Chemical Vapor Deposition (CVD) growth process.  
Type IIa

## PROPORTIONS



Sample Image Used

## COLOR

D E F G H I J Faint Very Light Light

## CLARITY

IF	VS <sup>1-2</sup>	VS <sup>1-2</sup>	SI <sup>1-2</sup>	I <sup>1-3</sup>
Internally Flawless	Very Very Slightly Included	Very Slightly Included	Slightly Included	Included

## LABORATORY GROWN DIAMOND REPORT



June 26, 2025	
IGI Report Number	LG719558035
Description	LABORATORY GROWN DIAMOND
Shape and Cutting Style	PRINCESS CUT
Measurements	5.45 X 5.25 X 4.01 MM
GRADING RESULTS	
Carat Weight	1.00 CARAT
Color Grade	D
Clarity Grade	VS 1

### ADDITIONAL GRADING INFORMATION

Polish	EXCELLENT
Symmetry	VERY GOOD
Fluorescence	NONE
Inscription(s)	 LG719558035
<p>Comments: This Laboratory Grown Diamond was created by Chemical Vapor Deposition (CVD) growth process.</p> <p>Type IIa</p>	



**www.igi.org**

© IGI 2020, International Gemological Institute

FD - 10 20



THIS DOCUMENT WAS PRODUCED WITH THE FOLLOWING SECURITY MEASURES: SPECIAL DOCUMENT PAPER, INK SCREENS, WATERMARK, BACKGROUND DESIGNS, HOLOGRAM AND OTHER SECURITY FEATURES NOT LISTED AND DO EXCEED DOCUMENT SECURITY INDUSTRY GUIDELINES

June 26, 2025  
GI Report No LG719558035

GI Report No L

PRINCESS CUT

5.45 X 5.25 X 4.01 MM  
Carat Weight: 1.00 CARAT

Catal Weight%	Color Grade	D
1.00		

Clarity Grade	VS 1
VS 1	

Depth 76.4%

able	68%
Girdle	Slightly Thick To Thick

**Summary**

Culet	Pointed
	

Polish  
Symmetry

Fluorescence

Inscription(s)	1991 LG719558035

**Comments:**  
This Laboratory Grown Diamond was

created by Chemical Vapor Deposition (CVD) growth process.

Type IIa