



**ELECTRONIC COPY**

LG719583995  
Report verification at igi.org



June 30, 2025

IGI Report Number **LG719583995**

Description **LABORATORY GROWN DIAMOND**

Shape and Cutting Style **EMERALD CUT**

Measurements **11.10 X 7.06 X 4.50 MM**

**GRADING RESULTS**

Carat Weight **3.54 CARATS**

Color Grade **E**

Clarity Grade **VVS 1**

June 30, 2025  
IGI Report Number **LG719583995**  
Description **LABORATORY GROWN DIAMOND**  
Shape and Cutting Style **EMERALD CUT**  
Measurements **11.10 X 7.06 X 4.50 MM**

**GRADING RESULTS**

Carat Weight **3.54 CARATS**

Color Grade **E**

Clarity Grade **VVS 1**

**ADDITIONAL GRADING INFORMATION**

Polish **EXCELLENT**

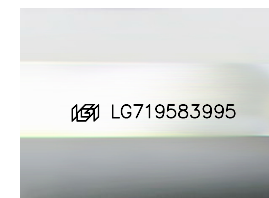
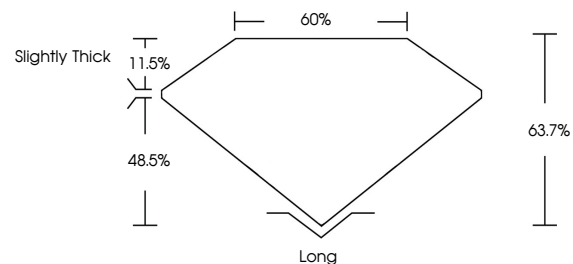
Symmetry **EXCELLENT**

Fluorescence **NONE**

Inscription(s) **IGI LG719583995**

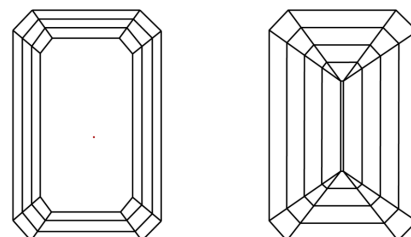
Comments: This Laboratory Grown Diamond was created by Chemical Vapor Deposition (CVD) growth process. Type IIa

**PROPORTIONS**



Sample Image Used

**CLARITY CHARACTERISTICS**



**KEY TO SYMBOLS**

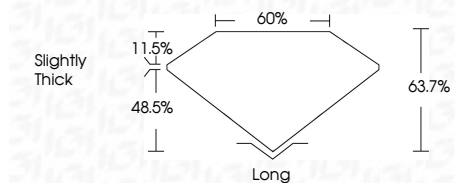
Red symbols indicate internal characteristics.  
Green symbols indicate external characteristics.

**COLOR**

D E F G H I J Faint Very Light Light

**CLARITY**

| IF                  | VS <sup>1-2</sup>           | VS <sup>1-2</sup>      | SI <sup>1-2</sup> | I <sup>1-3</sup> |
|---------------------|-----------------------------|------------------------|-------------------|------------------|
| Internally Flawless | Very Very Slightly Included | Very Slightly Included | Slightly Included | Included         |



**ADDITIONAL GRADING INFORMATION**

Polish **EXCELLENT**

Symmetry **EXCELLENT**

Fluorescence **NONE**

Inscription(s) **IGI LG719583995**

Comments: This Laboratory Grown Diamond was created by Chemical Vapor Deposition (CVD) growth process. Type IIa



**IGI**



|                        |                           |             |               |       |       |        |       |                |          |              |                |   |                 |
|------------------------|---------------------------|-------------|---------------|-------|-------|--------|-------|----------------|----------|--------------|----------------|---|-----------------|
| June 30, 2025          | IGI Report No LG719583995 | EMERALD CUT | 3.54 CARATS   | E     | VVS 1 | 63.7%  | 60%   | Slightly Thick | Long     | EXCELLENT    | EXCELLENT      | NONE  | IGI LG719583995 |
| 11.10 X 7.06 X 4.50 MM | Carat Weight              | Color Grade | Clarity Grade | Depth | Table | Graile | Culet | Polish         | Symmetry | Fluorescence | Inscription(s) | Comments: This Laboratory Grown Diamond was created by Chemical Vapor Deposition (CVD) growth process. Type IIa |                 |