

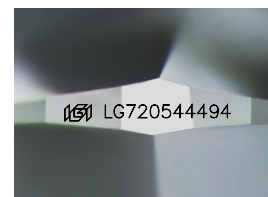
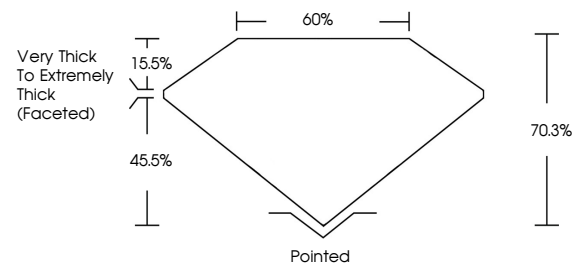


**ELECTRONIC COPY**

## LABORATORY GROWN DIAMOND REPORT

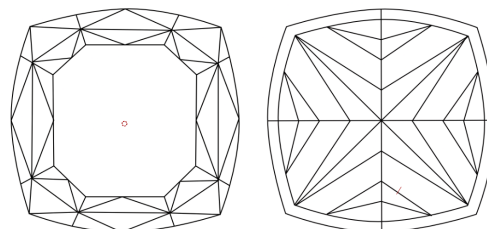
LG720544494  
Report verification at [igi.org](https://igi.org)

## PROPORTIONS



Sample Image Used

## CLARITY CHARACTERISTICS



## KEY TO SYMBOLS

Red symbols indicate internal characteristics.  
Green symbols indicate external characteristics.

**COLOR**

D E F G H I J Faint Very Light Light

## CLARITY

IF      VWS<sup>1-2</sup>      VS<sup>1-2</sup>      SI<sup>1-2</sup>      I<sup>1-3</sup>

Internally Flawless	Very Very Slightly Included	Very Slightly Included	Slightly Included	Included
------------------------	--------------------------------	---------------------------	----------------------	----------

## LABORATORY GROWN DIAMOND REPORT



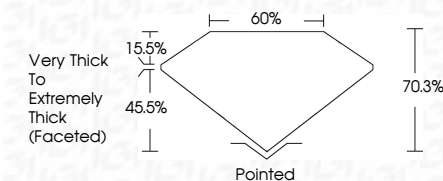
July 31, 2025

IGI Report Number **LG720544494**Description **LABORATORY GROWN DIAMOND**Shape and Cutting Style **SQUARE CUSHION MODIFIED  
BRILLIANT**

Measurements **5.47 X 5.32 X 3.74 MM**

## GRADING RESULTS

Carat Weight 1.03 CARAT

Color Grade **FANCY INTENSE BLUE**Clarity Grade VS 1

### ADDITIONAL GRADING INFORMATION

Polish EXCELLENT

Symmetry **EXCELLENT**Fluorescence **NONE**Inscription(s)  LG720544494

Comments: As Grown - No indication of post-growth treatment.

This Laboratory Grown Diamond was created by High Pressure High Temperature (HPHT) growth process.



© IGI 2020, International Gemological Institute

FD - 10 20

**www.igi.org**

THIS DOCUMENT WAS PRODUCED WITH THE FOLLOWING SECURITY MEASURES: SPECIAL DOCUMENT PAPER, INK SCREENS, WATERMARK, BACKGROUND DESIGNS, HOLOGRAM AND OTHER SECURITY FEATURES NOT LISTED AND DO EXCEED DOCUMENT SECURITY INDUSTRY GUIDELINE

July 31, 2025	GI Report No LG720544694	1.03 CARAT	VVS 1	Very Thick to Extremely Thick Faceted	Polished	None	Serial LG727544694	
Report No LG720544694	Color	70.3%	FANCY INTENSE BLUE		EXCELLENT			
SQUARE CLUSHION MODIFIED BRILLIANT	Carat Weight	60%			Patched			
	Color Grade							EXCELLENT
	Clarity Grade							
	5.47 x 5.32 x 3.74 MM	Depth			Fluorescence			
		Table			Symmetry			
		Girdle			Proportions			

**Comments:**  
As Grown - No indication of post-growth treatment.  
This Laboratory Grown Diamond was created by High Pressure High