



ELECTRONIC COPY

LG720544509
Report verification at igi.org



July 31, 2025
IGI Report Number **LG720544509**
Description **LABORATORY GROWN DIAMOND**
Shape and Cutting Style **CUSHION MODIFIED BRILLIANT**
Measurements **6.29 X 5.39 X 3.77 MM**
GRADING RESULTS
Carat Weight **1.23 CARAT**
Color Grade **FANCY INTENSE YELLOW**
Clarity Grade **VVS 1**

LABORATORY GROWN DIAMOND REPORT

July 31, 2025
IGI Report Number **LG720544509**
Description **LABORATORY GROWN DIAMOND**
Shape and Cutting Style **CUSHION MODIFIED BRILLIANT**
Measurements **6.29 X 5.39 X 3.77 MM**

GRADING RESULTS

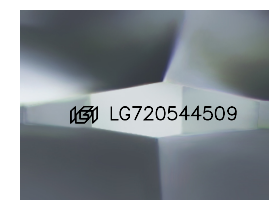
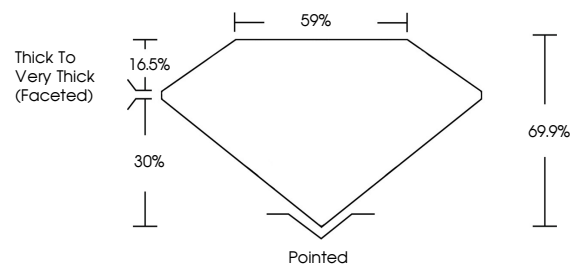
Carat Weight **1.23 CARAT**
Color Grade **FANCY INTENSE YELLOW**
Clarity Grade **VVS 1**

ADDITIONAL GRADING INFORMATION

Polish **EXCELLENT**
Symmetry **EXCELLENT**
Fluorescence **NONE**
Inscription(s) **IGI LG720544509**

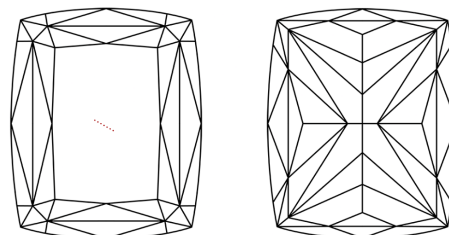
Comments: As Grown - No indication of post-growth treatment.
This Laboratory Grown Diamond was created by High Pressure High Temperature (HPHT) growth process.

PROPORTIONS



Sample Image Used

CLARITY CHARACTERISTICS



KEY TO SYMBOLS

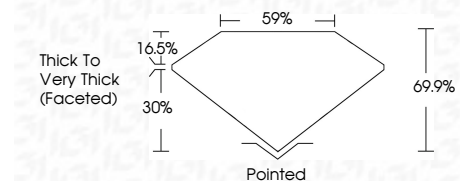
Red symbols indicate internal characteristics.
Green symbols indicate external characteristics.

COLOR

D E F G H I J Faint Very Light Light

CLARITY

IF	VS ¹⁻²	VS ¹⁻²	SI ¹⁻²	I ¹⁻³
Internally Flawless	Very Very Slightly Included	Very Slightly Included	Slightly Included	Included



ADDITIONAL GRADING INFORMATION

Polish **EXCELLENT**
Symmetry **EXCELLENT**
Fluorescence **NONE**
Inscription(s) **IGI LG720544509**
Comments: As Grown - No indication of post-growth treatment.
This Laboratory Grown Diamond was created by High Pressure High Temperature (HPHT) growth process.



July 31, 2025
IGI Report No **LG720544509**
CUSHION MODIFIED BRILLIANT
6.29 X 5.39 X 3.77 MM
1.23 CARAT
Color Grade **FANCY INTENSE YELLOW**
Clarity Grade **VVS 1**
Depth **69.9%**
Table **30%**
Girdle **Thick to Very Thick (Faceted)**
Culet **Pointed**
Polish **EXCELLENT**
Symmetry **EXCELLENT**
Fluorescence **NONE**
Inscription(s) **IGI LG720544509**
Comments: As Grown - No indication of post-growth treatment.
This Laboratory Grown Diamond was created by High Pressure High Temperature (HPHT) growth process.