



ELECTRONIC COPY

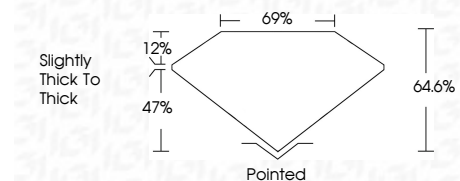
LG720578712
Report verification at igi.org



July 10, 2025
IGI Report Number **LG720578712**
Description **LABORATORY GROWN DIAMOND**
Shape and Cutting Style **MODIFIED DECAGONAL STEP CUT**

Measurements **8.89 X 5.25 X 3.39 MM**

GRADING RESULTS
Carat Weight **1.01 CARAT**
Color Grade **D**
Clarity Grade **VVS 2**



ADDITIONAL GRADING INFORMATION
Polish **EXCELLENT**
Symmetry **EXCELLENT**
Fluorescence **NONE**
Inscription(s) **IGI LG720578712**
Comments: This Laboratory Grown Diamond was created by Chemical Vapor Deposition (CVD) growth process. Type IIa



July 10, 2025
IGI Report No LG720578712
MODIFIED DECAGONAL STEP CUT
8.89 X 5.25 X 3.39 MM
1.01 CARAT
D
VVS 2
64.6%
69%
Slightly thick to thick
Pointed
EXCELLENT
EXCELLENT
NONE
IGI LG720578712
Comments: This Laboratory Grown Diamond was created by Chemical Vapor Deposition (CVD) growth process. Type IIa

LABORATORY GROWN DIAMOND REPORT

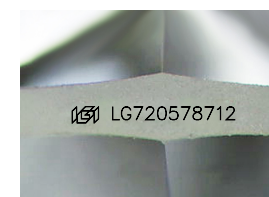
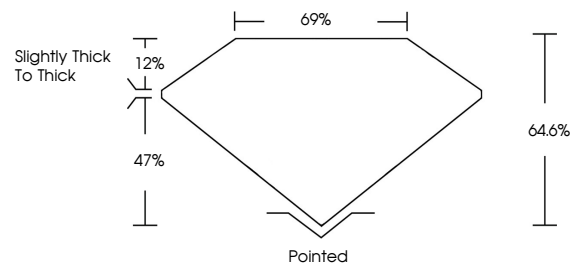
July 10, 2025
IGI Report Number **LG720578712**
Description **LABORATORY GROWN DIAMOND**
Shape and Cutting Style **MODIFIED DECAGONAL STEP CUT**
Measurements **8.89 X 5.25 X 3.39 MM**

GRADING RESULTS
Carat Weight **1.01 CARAT**
Color Grade **D**
Clarity Grade **VVS 2**

ADDITIONAL GRADING INFORMATION
Polish **EXCELLENT**
Symmetry **EXCELLENT**
Fluorescence **NONE**
Inscription(s) **IGI LG720578712**

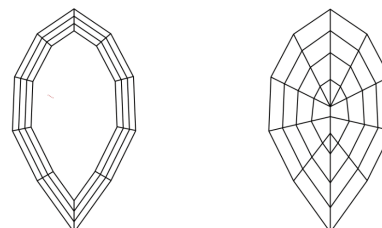
Comments: This Laboratory Grown Diamond was created by Chemical Vapor Deposition (CVD) growth process. Type IIa

PROPORTIONS



Sample Image Used

CLARITY CHARACTERISTICS



KEY TO SYMBOLS

Red symbols indicate internal characteristics.
Green symbols indicate external characteristics.

COLOR

D E F G H I J Faint Very Light Light

CLARITY

| | | | | |
|---------------------|-----------------------------|------------------------|-------------------|------------------|
| IF | VS ¹⁻² | VS ¹⁻² | SI ¹⁻² | I ¹⁻³ |
| Internally Flawless | Very Very Slightly Included | Very Slightly Included | Slightly Included | Included |

