



**ELECTRONIC COPY**

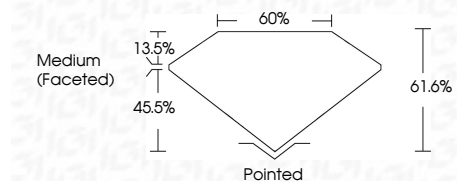
LG720594028  
Report verification at igi.org



July 9, 2025  
IGI Report Number **LG720594028**  
Description **LABORATORY GROWN DIAMOND**  
Shape and Cutting Style **ROUND MODIFIED BRILLIANT**  
Measurements **10.11 - 10.13 X 6.24 MM**

**GRADING RESULTS**

Carat Weight **4.04 CARATS**  
Color Grade **F**  
Clarity Grade **VVS 2**

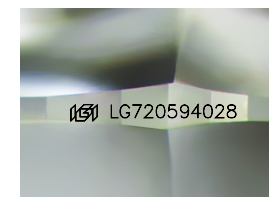


**ADDITIONAL GRADING INFORMATION**

Polish **EXCELLENT**  
Symmetry **EXCELLENT**  
Fluorescence **NONE**  
Inscription(s) **(IGI) LG720594028**  
Comments: This Laboratory Grown Diamond was created by Chemical Vapor Deposition (CVD) growth process. Type IIa

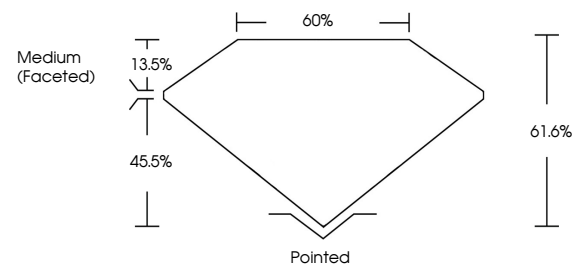


**IGI**

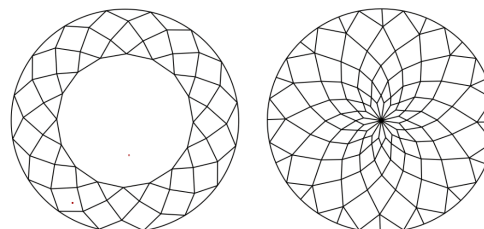


Sample Image Used

**PROPORTIONS**



**CLARITY CHARACTERISTICS**



**KEY TO SYMBOLS**

Red symbols indicate internal characteristics.  
Green symbols indicate external characteristics.

**COLOR**

D E F G H I J Faint Very Light Light

**CLARITY**

IF	VS <sup>1-2</sup>	VS <sup>1-2</sup>	SI <sup>1-2</sup>	I <sup>1-3</sup>
Internally Flawless	Very Very Slightly Included	Very Slightly Included	Slightly Included	Included



July 9, 2025  
IGI Report No **LG720594028**  
**ROUND MODIFIED BRILLIANT**  
10.11 - 10.13 X 6.24 MM  
4.04 CARATS  
F  
VVS 2  
61.6%  
45.5%  
Medium (Faceted)  
Pointed  
EXCELLENT  
EXCELLENT  
NONE  
None  
(IGI) LG720594028  
Comments: This Laboratory Grown Diamond was created by Chemical Vapor Deposition (CVD) growth process. Type IIa