

ELECTRONIC COPY

LABORATORY GROWN DIAMOND REPORT

July 28, 2025	
IGI Report Number	LG723545669
Description	LABORATORY GROWN DIAMOND
Shape and Cutting Style	ROUND BRILLIANT
Measurements	6.33 - 6.37 X 3.98 MM

GRADING RESULTS

Carat Weight	1.00 CARAT
Color Grade	E
Clarity Grade	VVS 2
Cut Grade	EXCELLENT

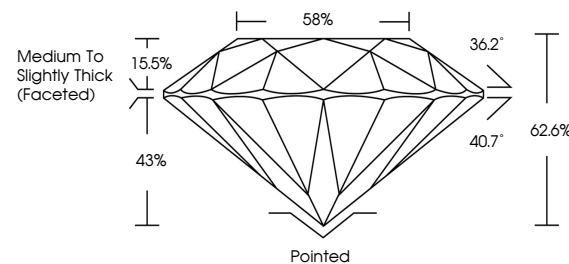
ADDITIONAL GRADING INFORMATION

Polish	EXCELLENT
Symmetry	EXCELLENT
Fluorescence	NONE
Inscription(s)	15 LG723545669

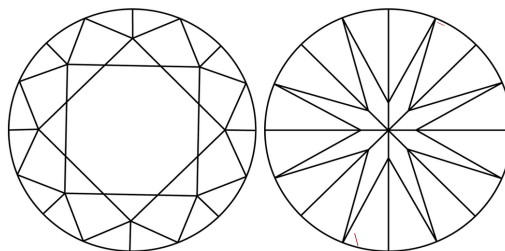
Comments: As Grown - No indication of post-growth treatment.
This Laboratory Grown Diamond was created by High Pressure High Temperature (HPHT) growth process.
Type II

LG723545669
Report verification at igi.org

PROPORTIONS

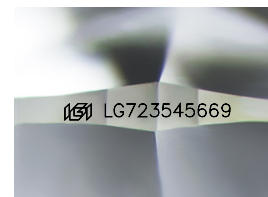


CLARITY CHARACTERISTICS



KEY TO SYMBOLS

Red symbols indicate internal characteristics.
Green symbols indicate external characteristics.



Sample Image Used

COLOR

D E F G H I J Faint Very Light Light

CLARITY

IF WS¹⁻² VS¹⁻² SI¹⁻² I¹⁻³

Internally Flawless	Very Very Slightly Included	Very Slightly Included	Slightly Included	Included
------------------------	--------------------------------	---------------------------	----------------------	----------



© IGI 2020, International Gemological Institute

FD - 10 20

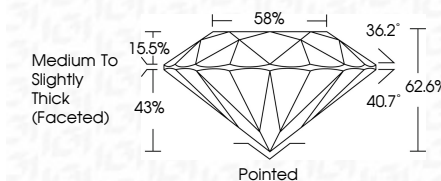
LABORATORY GROWN DIAMOND REPORT



July 28, 2025	
IGI Report Number	LG723545669
Description	LABORATORY GROWN DIAMOND
Shape and Cutting Style	ROUND BRILLIANT
Measurements	6.33 - 6.37 X 3.98 MM

GRADING RESULTS

Carat Weight	1.00 CARAT
Color Grade	E
Clarity Grade	VVS 2
Cut Grade	EXCELLENT



ADDITIONAL GRADING INFORMATION

Polish	EXCELLENT
Symmetry	EXCELLENT
Fluorescence	NONE
Inscription(s)	(G) LG723545669
Comments: As Grown - No indication of post-growth treatment.	
This Laboratory Grown Diamond was created by High Pressure High Temperature (HPHT) growth process.	
Type II	



JUN 28, 2025		100% CARAT	
IGI Report No. IGR723545649		VVS 2	
ROUND BRILLIANT		EXCELLENT	
3.95 - 4.37 X 3.98 MM		62.0%	
Carat Weight		58%	
Color Grade		Medium to Slightly Thick Faceted	
Clarity Grade		Pointed	
Cut Grade		EXCELLENT	
Depth		NONE	
Table		1681 LG723545649	
Girdle		Fluorescence	
		Inscriptions	
		Culet	
		Polish	
		Symmetry	
		Comments:	
		1. No indication of post-growth treatment.	
		2. The Laboratory Grown Diamond was created by High Pressure High Temperature (HPHT) growth process.	
		Type II	